

SAND ISLAND PETROGLYPH PANEL & SAN JUAN RIVER ACCESS

BEARS EARS EDUCATION CENTER

BLUFF FORT & VISITOR CENTER

MAP SYMBOLS

- BLUFF AIRPORT
- BLUFF GREAT HOUSE
- CEDAR HALL
DesignBuildBLUFF
- CEMETERY
- CITY PARK
- COMMUNITY CENTER
- EV CHARGING STATIONS
- LIBRARY
- POST OFFICE

BLUFF BUSINESS KEY

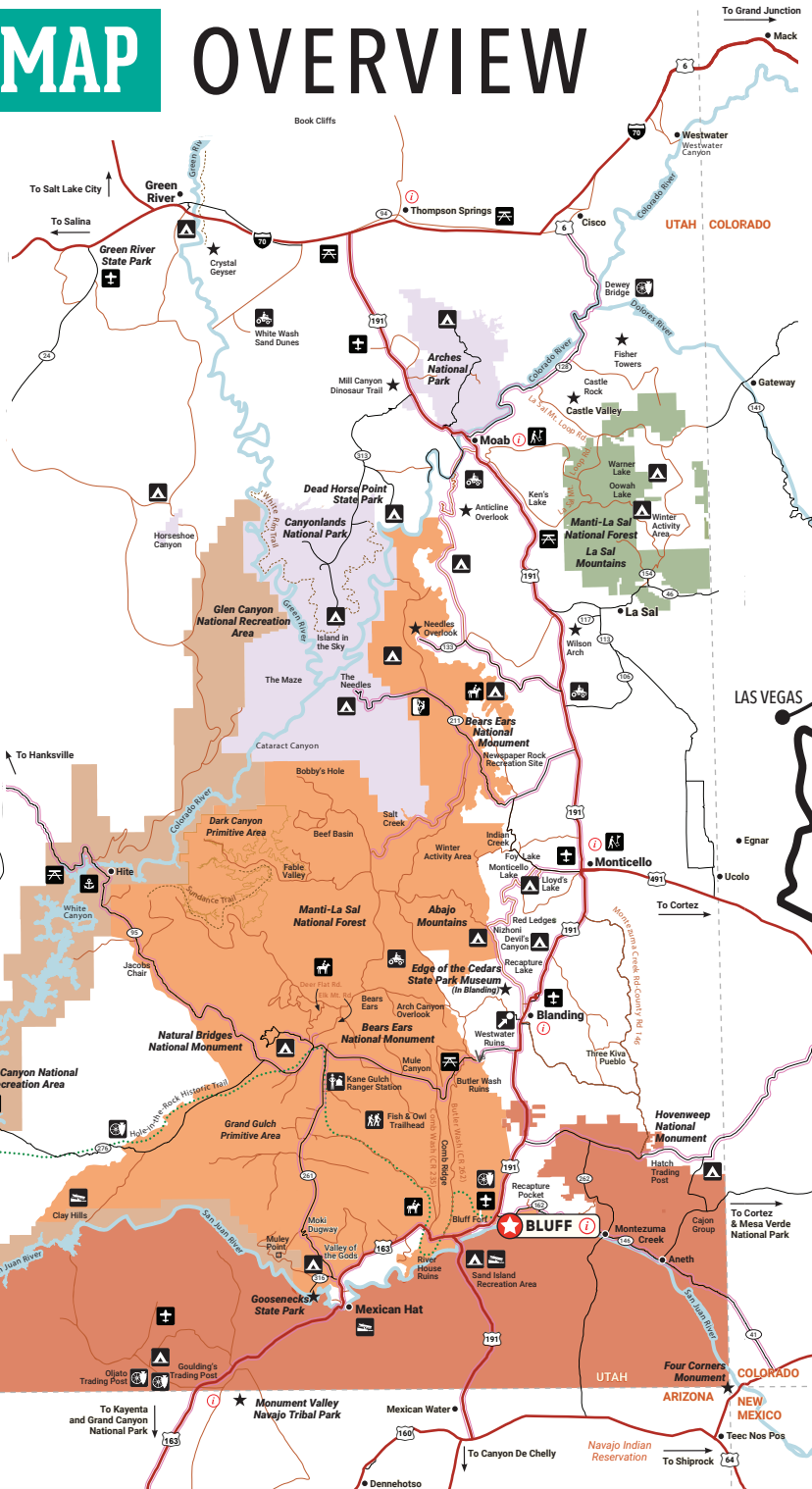
- | DINING | LODGING |
|--|---|
| 1 CANYON SMOKEHOUSE | 1 ADAMS HOUSE |
| 2 CEDAR SHACK
AT DESERT ROSE RESORT & CABINS | 2 BLUFF DWELLINGS RESORT |
| 3 COMB RIDGE EAT AND DRINK | 3 BLUFF GARDENS CABINS |
| 4 DAIRY CAFÉ | 4 CADILLAC RANCH RV PARK |
| 5 DUKE'S
AT DESERT ROSE RESORT & CABINS | 5 CANYON WREN
BED & BREAKFAST |
| 6 PICADILLY PIZZA
AT K&C GAS/CONVENIENCE | 6 CORAL SANDS RV PARK |
| 7 TWIN ROCKS CAFÉ | 7 COTTONWOOD CABINS |
| SHOPPING | 8 COTTONWOOD RV PARK |
| 1 AMIRA'S BOUTIQUE
AT DESERT ROSE RESORT & CABINS | 9 DESERT ROSE
RESORT & CABINS |
| 2 BEARS EARS EDUCATION CENTER | 10 KOKOPELLI INN |
| 3 BLUFF ART & CURIOSITY SHOPPE | 11 LA POSADA PINTADA |
| 4 BLUFF DWELLINGS RESORT | 12 MOKEE MOTEL |
| 5 CLOUDWATCHER STUDIO
BY APPOINTMENT ONLY | 13 RECAPTURE LODGE |
| 6 CO-OP & VISITOR CENTER
AT BLUFF FORT | 14 WILLOW STREET
COTTAGES & STUDIOS |
| 7 COMB RIDGE EAT AND DRINK | |
| 8 COW CANYON
TRADING POST & GALLERY | GUIDES |
| 9 DAIRY CAFÉ
AT COTTONWOOD RV PARK | 1 DESERT ROSE TOURS
AT DESERT ROSE RESORT & CABINS |
| 10 K & C GAS/CONVENIENCE | 2 TSÉ KOOH OUTFITTERS |
| 11 TWIN ROCKS TRADING POST | 3 WILD EXPEDITIONS |
| 12 TWIN ROCKS CAFÉ | |
| 13 WILD EXPEDITIONS | |
| 14 YANITO BAAHOZHO GALLERY | |

BLUFF UTAH

AREA MAP OVERVIEW

ICON LEGEND

- Campground
- Airstrip
- Rest Area
- Historical Site
- Golf Course
- ATV Area
- Boat Ramp
- Marina
- Point of Interest
- Horseback Riding
- Rock Climbing
- Ranger Station
- Scenic Attraction
- Visitor Center



MAP LEGEND

- | ROADS | LAND DESIGNATION |
|--|---------------------------|
| Scenic Byway or Backway | National Park |
| Primitive Roads
<i>High Clearance Recommended</i> | National Monument |
| Passenger Vehicle | National Forest |
| Highway | National Recreation Area |
| Hole-in-the-Rock Historic Trail | Navajo Reservation |
| Hiking / Biking Trail | Primitive/Wilderness Area |

GETTING AROUND IN CANYON COUNTRY

Most areas and sites are on paved roads, some accessed via graded gravel, and a few require 4-wheel drive. Most are within a short drive from our communities.

Those areas accessed by 4-wheel drive may require long days or overnight stays. Prepare for a wilderness experience. It is not recommended that you travel to remote sites alone or with only one vehicle. When wet, some roads are impassable even for a 4-wheel vehicle. Check weather and road conditions prior to a trip into the backcountry.

REGIONAL MAP



HOURS FROM:

FROM THE NORTH & EAST

FROM	TO	TIME (HR/MIN)
Salt Lake City, UT	Monticello, UT	5H
Denver, CO	Monticello, UT	6H
Grand Junction, CO	Monticello, UT	2H 30M
Moab, UT	Monticello, UT	1H
Durango, CO	Monticello, UT	2H
Monticello, UT	Blanding, UT	20M
Blanding, UT	Bluff, UT	30M
Bluff, UT	Mexican Hat, UT	30M
Mexican Hat, UT	Monument Valley	20M

FROM THE SOUTH

FROM	TO	TIME (HR/MIN)
Page, AZ	Monument Valley	2H
Phoenix, AZ	Monument Valley	4H47M
Las Vegas, NV	Monument Valley	6H
Los Angeles, CA	Monument Valley	9H24M

WITHIN UTAH'S CANYON COUNTRY

FROM	TO	TIME (HR/MIN)
Monticello	Canyonland Ntl. Park & Needles	1H
Monticello	Bears Ears Ntl. Monument	30M
Blanding	Lake Powell (Halls Crossing)	1H 30M
Blanding	Natural Bridges Ntl. Monument	50M
Blanding	Bears Ears Ntl. Monument	10M
Bluff	Bears Ears Ntl. Monument	5M
Bluff	Hovenweep Ntl. Monument	1H
Bluff	Goosenecks State Park	30M
Bluff	Valley of the Gods	20M
Bluff	San Juan River (Sand Island)	5M
Bluff	Four Corners Monument	1H

THE NUMBERS...

