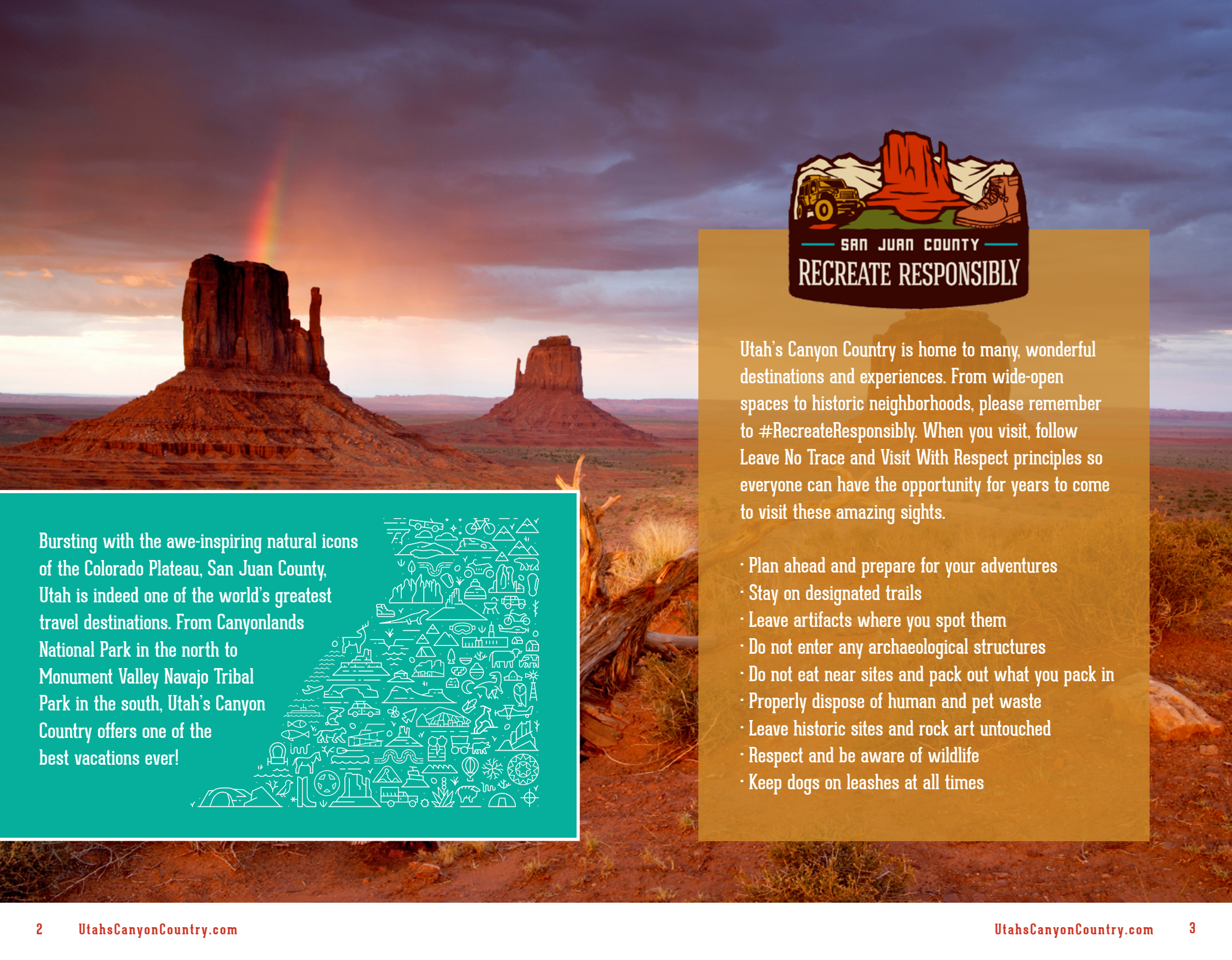
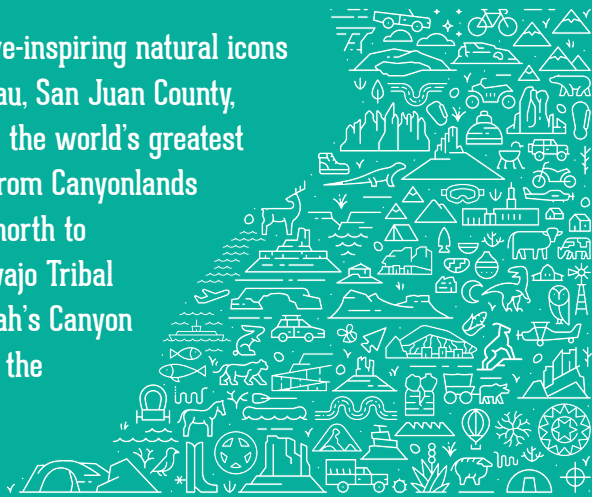


SAN JUAN COUNTY, UTAH
UtahsCanyonCountry.com



Bursting with the awe-inspiring natural icons of the Colorado Plateau, San Juan County, Utah is indeed one of the world's greatest travel destinations. From Canyonlands National Park in the north to Monument Valley Navajo Tribal Park in the south, Utah's Canyon Country offers one of the best vacations ever!



Utah's Canyon Country is home to many, wonderful destinations and experiences. From wide-open spaces to historic neighborhoods, please remember to #RecreateResponsibly. When you visit, follow Leave No Trace and Visit With Respect principles so everyone can have the opportunity for years to come to visit these amazing sights.

- Plan ahead and prepare for your adventures
- Stay on designated trails
- Leave artifacts where you spot them
- Do not enter any archaeological structures
- Do not eat near sites and pack out what you pack in
- Properly dispose of human and pet waste
- Leave historic sites and rock art untouched
- Respect and be aware of wildlife
- Keep dogs on leashes at all times

TABLE OF CONTENTS

SCENIC LOCATIONS

Canyonlands National Park	6
Monument Valley Navajo Tribal Park	10
Natural Bridges National Monument	12
Hovenweep National Monument	14
Bears Ears National Monument	16
Edge of the Cedars State Park	20
Gooseheads State Park	22
Needles Overlook - Canyon Rims Rec Area	24
Grand Gulch	25
Cedar Mesa	26
Valley of the Gods	28
Rainbow Bridge National Monument	29
Lake Powell/Glen Canyon Nat. Rec. Area	30
Four Corners Monument	31
Manti La Sal National Forest	32
San Juan River	34

ACTIVITIES

Rafting/Kayaking	35
Hiking/Backpacking	36
ATV	38
Biking	39
Fishing	40
Horseback Riding	41
Rock Climbing/Canyoneering	42
Golfing	43
Stargazing	44
Winter Activities	45
Museums	46
Scenic Byways/Drives	48
Native American Cultural Sights	52

SERVICES

Lodging	54
Commercial Campgrounds	57
Public Campgrounds	58
Dining	60
Guides and Outfitters	62
Our Communities	65
Airport Information	67
Visitor Information	68
Area Map	70





THE NEEDLES DISTRICT

CANYONLANDS NATIONAL PARK

As the largest national park in Utah covering 527.5 square miles (1,366.2 km), Canyonlands National Park is divided into three distinct districts: Island in the Sky, The Needles District, and the Maze. Horseshoe Canyon is also part of Canyonlands but it is geographically separate.

LOCATION 50 miles (80.5 km), 55 minutes from Monticello on UT-211

THINGS TO DO

2 HOURS Stop at the visitor center to learn about the history of Canyonlands and the geological formation of the park. Take the scenic drive to see the Needles District rock formations and views of the surrounding landscape.

HALF DAY Take the scenic drive through the park and hike some of the easy, short trails in the park, such as Cave Spring, Pothole Point, and Roadside Ruin.

FULL DAY Immerse yourself in the park by hiking some of the longer trails such as Chesler Park, the Confluence Overlook, or Druid Arch.





Druid Arch



THE NEEDLES DISTRICT CANYONLANDS NATIONAL PARK

Named for the Cedar Mesa Sandstone spires that jut up from the landscape, The Needles District of Canyonlands has roughly 74 miles (119 km) of hiking trails ranging in various difficulties and sceneries. The Needles Campground provides overnight accommodations for visitors who want to stay longer in order to experience more of the beautiful red rock spires.

LOCATION 35 miles west of US-191 (50 miles/1 hr NW of Monticello)





THINGS TO DO

2 HOURS Take in the view of the Left and Right Mittens and Merrick Butte from the overlook at the visitor center. Shop for Native American art and jewelry in local gift shops and vendor booths. Participate in a short tour with a Navajo guide and learn about Navajo history, culture, and film history of Monument Valley.

FULL DAY Visitors with more time can experience a full-day tour to Monument Valley and adjacent Mystery Valley. Tours will visit numerous natural stone arches, as well as petroglyphs and pictographs.

MONUMENT VALLEY

NAVAJO TRIBAL PARK

Natural forces of wind and water have eroded the land in Monument Valley for over 50 million years. As the wind and water cut into the surface of the layered sedimentary rock, unique buttes and pinnacles were formed, creating a stunning scene as you look over the horizon. The tallest butte in Monument Valley rises over 1,000 feet (304.8 m) above the valley floor. Shrubs, trees and windblown sand are also part of the magnificent colors of the valley making it a wonderful place to visit.

LOCATION 5 miles (8.1 km) east of US-163, approximately 23 miles (37 km) southwest of Mexican Hat



This natural wonder is the perfect place for guided tours, jeeping, hiking and more. Enjoy a tour with a native guide, shop for authentic native art view daily screenings of movies filmed in Monument Valley at the Earth Spirit Theater at Goulding's Lodge. Visit the museums at Goulding's Lodge and the park visitor center.



Sipapu Bridge

THINGS TO DO

2 HOURS Drive the 9-mile (14.5 km) scenic loop and enjoy spectacular views of White Canyon. Stop at the overlooks for all three bridges (Sipapu, Kachina, and Owachomo), and enjoy the short .5 mile (804.7 m) round-trip hike to Owachomo Bridge for amazing photo ops!

HALF DAY Stop at the visitor center to learn about the formation of the park and discover the difference between natural bridges and arches. Drive the 9-mile (14.5 km) scenic loop and hike to a couple of the bridges with additional stops at overlooks as time allows.

FULL DAY Spend the day hiking a loop through the bottom of White Canyon that winds under or past all three natural bridges; Sipapu, Kachina, and Owachomo. Stick around after your hike to enjoy a ranger-led dark sky program in the world's first International Dark Sky Park (offered late spring through early fall).

NATURAL BRIDGES NATIONAL MONUMENT

Named the first International Dark Sky Park in the world, Natural Bridges National Monument provides an opportunity to view up to 15,000 stars in the night sky without obstruction. This monument also shelters three of the world's largest natural stone bridges including Sipapu Bridge—which is taller than the capitol building in Washington D.C.—Kachina Bridge and Owachomo Bridge. Whether you are hiking, sightseeing or participating in a ranger-led astronomy program, Natural Bridges is beautiful day or night.



Kachina Bridge



Owachomo Bridge

LOCATION 39 miles (63 km) or 45 minutes from Blanding along UT-95



The Ancestral Puebloan towers of Hovenweep were built between A.D. 500 and 1300. The structures vary in shape and size including circular kivas (ceremonial rooms) and towers, and square or D-shaped dwellings. A visitor center is located on site, as well as hiking trails, restrooms, and a campsite at the Square Tower Group.

HOVENWEEP NATIONAL MONUMENT

Hovenweep National Monument offers the experience of true exploration among its sites and camouflaged pictographs and petroglyphs. Structures were built on the canyon surface by the Ancestral Puebloan people who once thrived here. Dwellings were also built into overhangs and along canyon walls. The people who lived here over 10,000 years ago were hunter/gatherers who foraged the landscape to gather plants and hunt game. By A.D. 900 settlements began to appear and by the late 1200s, Hovenweep was home to over 2,500 residents.

LOCATION 42 miles (67.6 km) or 50 minutes from Bluff and 46 miles (74 km) or 54 minutes from Blanding

THINGS TO DO

2 HOURS Walk the paved, .32-mile (515 m), roundtrip path from the visitor center to Canyon Overlook on the rim of Little Ruin Canyon. From the overlook, enjoy views of several Square Tower Group structures as well as Sleeping Ute Mountain.

HALF DAY Explore several of the six prehistoric villages constructed between A.D. 1200 and 1300—Square Tower, Cutthroat Castle, Horseshoe, Hackberry, Holly, and Cajon. Marvel at a variety of structures including multi-story towers perched on boulders and square, circular, and D-shaped structures, as well as ceremonial kivas.





INDIAN CREEK AREA

To avoid the summer heat, the best times to visit Bears Ears National Monument are March through late May and September through October. Drive the Indian Creek Corridor Scenic byway and admire the scenery of the monument area. Bears Ears National Monument is open year-round.

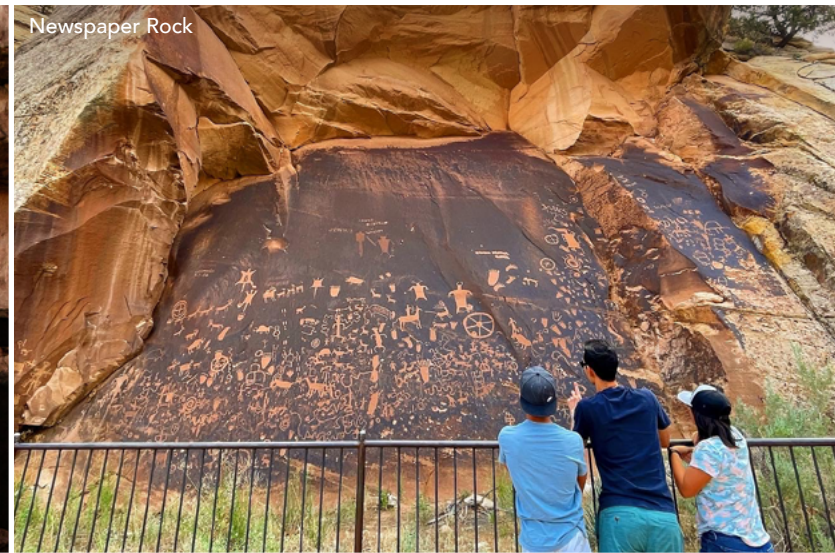
Located within the Indian Creek area, Newspaper Rock showcases more than 2,000 years worth of petroglyphs engraved by Puebloans and other cultural people. As one of the biggest petroglyph collection in the country, visitors stand at the base and look at the 200-square foot (18.5-square meter) rock and try to decipher its meaning. Newspaper Rock is like a living museum located 15 miles (24 km) west of US-191 along the Indian Creek Corridor Scenic Byway (UT-211).

BEARS EARS NATIONAL MONUMENT

Two towering buttes stand out against the landscape, a broad expanse of red rock, juniper forests and high plateaus. Within the 1.36 million acres of Bears Ears National Monument, visitors can learn about cultural historic and prehistoric legacies through cultural resources such as ancient cliff dwellings, granaries and kivas as well as artifacts such as ancient tools and pottery. Petroglyphs and pictographs are also found in abundance within the monument.



Hotel Rock



Newspaper Rock

THINGS TO DO

2 HOURS Drive scenic byway 211 through Indian Creek to the border of the Needles District of Canyonlands National Park and stop at Newspaper Rock to view a large petroglyph panel representing multiple cultures. The oldest carvings at Newspaper Rock date back almost 2,000 years and the panel includes carvings representing Archaic, Anasazi, Fremont, Navajo, Anglo, and Pueblo cultures.

LOCATION UT-211, 30 minutes northwest of Monticello



CEDAR MESA AREA

The Cedar Mesa area of Bears Ears National Monument encompasses a fascinating array of geological and archeological features. Along with the legacy of previous Native American residents, the greatest modern interest is remnants of incredible cliff dwellings. These dwellings were built with stone and adobe mortar into the sides of mesas, mountains and caves. Many are in remarkably good condition, even after hundreds of years of vacancy and were once used as protection and storage. The area is collectively a part of the Trail of the Ancients Scenic Byway.

LOCATION 10 minutes from Bluff,
20 minutes from Blanding



Arch Canyon



THINGS TO DO

2 HOURS Stop at Butler Wash and Mule Canyon sites to see examples of two different archaeological structures, commonly found in Utah's Canyon Country. At Butler Wash, a 1-mile (1.6 km) roundtrip trail leads to an overlook of several cliff-dwelling sites comprised of habitation, storage, and ceremonial structures. Mule Canyon allows visitors to view an underground, ceremonial kiva structure.

HALF DAY Hike to an archaeological site along Hwy 95 such as House on Fire or Cave Towers, or take in spectacular views of Arch Canyon from Arch Canyon Overlook.

FULL DAY Start your day with a stop at Edge of the Cedars State Park to see one of the Four Corner regions' largest collections of Ancestral Puebloan pottery and artifacts. Then, climb down into a 1,000-year-old kiva located on the museum grounds. Continue your day by exploring an archaeological site or scenic overlook along Hwy 95 such as House on Fire, Cave Towers, or Arch Canyon Overlook (4WD/high clearance required for many sites).

EDGE OF THE CEDARS STATE PARK

Within the desert landscape of southern Utah is the Edge of the Cedars State Park and Museum, where visitors can learn about the lifestyle and culture of the Ancestral Puebloan people. The Puebloan lifestyle is shown in many ways throughout the 6.65 acre park, including the restored kiva located behind the museum. Archaeologists excavated and restored the 1,000 year-old kiva to give visitors a first-hand look at the unique underground structure, and allow them to experience the environment used for religious rituals and political meetings.

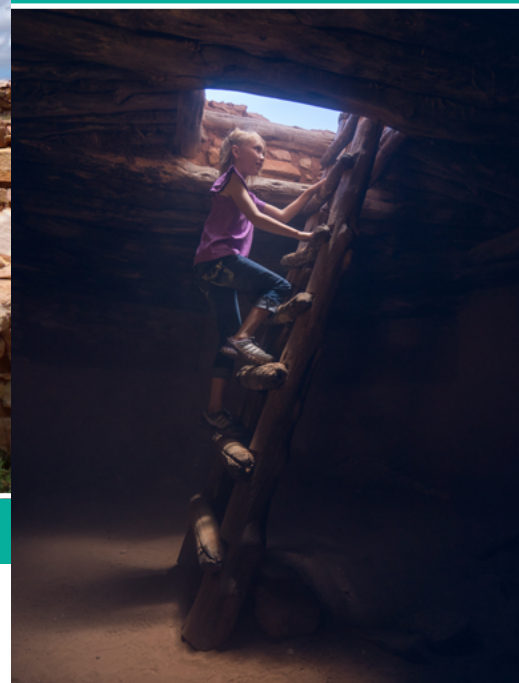


LOCATION 600 W 400 North, Blanding



THINGS TO DO

2-3 HOURS Explore this hidden gem to see one of the Four Corner regions' largest collections of Ancestral Puebloan pottery and artifacts. Enjoy the unique 'visible storage' display which allows visitors to view one-of-a-kind artifacts normally kept in closed storage. Visitors can also climb a replica ladder down into a 1,000-year-old kiva located on the museum grounds.



Just as archaeologists excavated the kiva outside, they work inside the museum to restore the Puebloan pottery. The museum displays the largest collection of Ancestral Puebloan pottery in the Southwest. The delicate and beautifully-painted pottery along with other artifacts are shown in permanent exhibits that can be seen year-round. Temporary exhibits throughout the year are also shown. Both types of exhibits are a good activity for children and adults.



GOOSENECKS STATE PARK

Millions of years ago, the land at Goosenecks State Park was flat. Then, the San Juan River meandered, the land rose upward, the river flowed faster and the water cut into the stone giving us what you can now see today—a powerful, natural landscape.

Take a moment to stand on the rim of the canyon and overlook the San Juan River over 1,000 feet (305 m) below. This small park offers over 300 million years of geology spread below the viewpoint along with the river weaving for 6 miles (10 km) back and forth in a distance of one and a half miles (2.4 km) advancing west. Visit the park during the evening to see thousands of twinkling stars, as Goosenecks is a designated International Dark Sky Park.

THINGS TO DO

30 MINUTES-1 HOUR View the largest entrenched river meander in North America from the overlook at Goosenecks. From the overlook, visitors can observe where the San Juan River twists and turns, flowing a distance of over 6 miles (9.7 km) while advancing 1.5 miles (2.4 km) west toward Lake Powell.



LOCATION UT-316, 8 miles (13 km) 11 minutes from Mexican Hat

NEEDLES OVERLOOK

CANYON RIMS RECREATION AREA

Imagine sitting 1,600 feet (486 m) above the Needles District of Canyonlands. The Needles Overlook offers nearly 360-degree views of the sandstone structures that line your horizon view. Experience serenity as you will most likely have the whole place to yourself. Stop at the three other overlooks within the Canyon Rims Recreation Area as you drive along County Rd 132. There is no entrance fee.



GRAND GULCH

Experience the primitive outdoors with day and overnight hikes through Grand Gulch's 50-mile (80.5 km) canyon system. The rugged and remote backcountry showcases Ancient Puebloan sites as well as petroglyphs and pictographs in their natural setting. This popular hiking area features miles of winding trails as visitors work their way through the serpentine canyon. Hiking through this backcountry area requires a permit.

LOCATION 20 miles north of Monticello, it's also 23 miles west on hwy 133 (total driving time/distance from Monticello is 58 minutes/43 miles)

LOCATION On UT-261 between UT-95 and Mexican Hat - 36 miles (57.9 km) or 39 minutes west of Blanding and 33 miles (53.1 km) or 44 minutes north of Mexican Hat



THINGS TO DO

2 HOURS Stop at Butler Wash and Mule Canyon Ruins to see examples of two different archaeological structures, commonly found in Utah's Canyon Country. At Butler Wash, a 1-mile (1.6 km) roundtrip trail leads to an overlook of several cliff-dwelling sites comprised of habitation, storage, and ceremonial structures. Mule Canyon allows visitors to view an underground, ceremonial kiva structure.

HALF DAY Hike to an archaeological site along Hwy 95 such as House on Fire, Cave Towers, or take in spectacular views of Arch Canyon from Arch Canyon Overlook.

FULL DAY Start your day with a stop at Edge of the Cedars State Park to see one of the Four Corner regions' largest collections of Ancestral Puebloan pottery and artifacts. Then, climb down into a 1,000-year-old kiva located on the museum grounds. Continue your day by exploring an archaeological site or scenic overlook along Hwy 95 such as House on Fire, Cave Towers, or Arch Canyon Overlook (4WD/high clearance required for many sites).

CEDAR MESA

Within the Cedar Mesa area, there is a large plateau that extends over 400 square miles (1,063 square km). One way to access Cedar Mesa is by driving UT-261. The Moki Dugway, a 3-mile section of unpaved switchbacks, is located on this road (See page 50). To the east of Cedar Mesa is a jagged monocline named Comb Ridge that curves for 80 miles (128.7 km) across UT-95 and US-163. Nearby, Butler Wash showcases fragile, unrestored, Ancestral Puebloan cliff dwellings, petroglyphs and other remains of their lifestyle in A.D. 1200.

LOCATION Along UT-95, about 17 miles (27.4 km) (20 minutes) west of Blanding and UT-261 14 miles (22.5 km) (25 minutes) north of Mexican Hat

Cave Towers, located in Mule Canyon, features the remains of towers built by the Ancestral Puebloan people. Additional nearby structures are tucked into alcoves along the canyon walls and are fragile and unrestored. No matter what part of Cedar Mesa you explore, excellent adventures through history in a wonderful setting await.





THINGS TO DO

2 HOURS Drive the scenic 17-mile (27.36 km) loop to view beautiful Cedar Mesa sandstone monoliths, pinnacles, and other geological features of this area known as a 'miniature Monument Valley'. For visitors looking for a longer stay, dispersed camping is allowed in Valley of the Gods; however, no campfires are allowed.



VALLEY OF THE GODS

You won't forget this backcountry adventure through freestanding sandstone monoliths, delicate spires and long rock fins. To explore Valley of the Gods, you can drive a scenic 17-mile (27.4 km) loop. This scenic drive is an easy and beautiful way for all visitors to experience the beautiful and natural sights.

LOCATION Between US-163 and UT-261, about 14 miles (22.5 km) Northwest of Mexican Hat



RAINBOW BRIDGE NATIONAL MONUMENT

Created from sand dunes up to 5,000 feet (1,524 m) deep that hardened to rock, Rainbow Bridge is a Navajo Sandstone beauty. The bridge spans 275 feet (83.8 m) across Bridge Creek in an almost perfect arch. The top of the arch is 42 feet (12.8 m) thick and 33 feet (10 m) wide.

Rainbow Bridge is the world's largest known natural bridge. The bridge holds significance to the native people in the area and continues to inspire many of the 300,000 visitors each year. Located near Lake Powell, visitors can visit by boat or obtain a permit from Navajo Parks and Recreation to take the two-day hike from the small community of Navajo Mountain.

LOCATION On Lake Powell - Accessible via 50 mile (one-way) boat tour from Wahweap Marina



LAKE POWELL

Located in the Glen Canyon National Recreation Area, Lake Powell is the perfect gathering place for hiking, boating, fishing and more. Many visitors find the remote backcountry a challenging adventure. The deep, red-rock canyons are not only beautiful to see, but are the perfect backdrop to all the activities you can experience.

There are activities for everyone to enjoy at Lake Powell, whether on land or on water. On the water, many enjoy fishing, boat tours and watersports. On the land around the lake, visitors can hike to Rainbow Bridge and other nearby sights, stop by the visitors center and stay at campgrounds. The lake is just one aspect of the recreation area that encompasses over 1.2 million acres with experiences reaching far beyond the water.

LOCATION Halls Crossing - Hwy 276, and Hite Marina - Hwy 95

FOUR CORNERS MONUMENT

Many visitors travel by tour bus or car in order to stand in Utah, Arizona, New Mexico and Colorado all at one time! Four Corners Monument is the only place in the United States where four states share a single point.

THINGS TO DO

30 MINUTES - 1 HOUR View the only place in the United States where four states share a single point on the compass—Utah, Arizona, New Mexico, and Colorado meet at this point. The marker offers a great photo opportunity, as well as entertainment watching other visitors get creative for their own photos. Shop the vendor stalls surrounding the monument for locally made items such as jewelry, arts and crafts, pottery, sand paintings, and more. Traditional Native American food is also available to purchase.



LOCATION Off US-160, located 48 miles (54 min) from Bluff



MANTI LA SAL NATIONAL FOREST

The San Juan County portion of the Manti La Sal National Forest consists of two mountain ranges: The La Sals and the Abajos. These two isolated areas rise over 12,000 feet (3,657.6 m) in elevation and have pine, fir and aspen trees that contrast with the red-rock canyons. The forest habitat is home to a dense population of black bear and the largest population of elk in Utah.

Many trails are provided for numerous activities including hiking, jeeping, biking, ATVing and horseback riding. Some trails can lead to sweeping views of the Four Corners region.

LOCATION **Abajo Mountains-** County Road 101, 2.5 miles (4 km) or 5 minutes west of Monticello
La Sals- UT-46, 2.5 miles (4 km) or 4 minutes north of La Sal

THINGS TO DO

2 HOURS Take a scenic drive on County Rd. 1010 from Monticello, traveling 17 miles (27.36 km) along the side of the Abajo Mountains before reaching the junction of Hwy 211, to the Indian Creek area of Bears Ears National Monument and the Needles District of Canyonlands National Park. This paved route provides spectacular views of the desert as well as access to several small fishing lakes and great opportunities for wildlife viewing!

HALF DAY Drive the Abajo Loop Scenic Backway between Monticello and Blanding (County Rd. 285/Forest Rd. 79). This route climbs to 9,000 feet (2,743.2 m) in elevation and traverses 30 miles (48.3 km) of mountainous terrain as it skirts the base of Abajo Peak. This route provides access to many well-maintained and signed, multi-use trails of varying difficulties.

FULL DAY Drive Elk Ridge Road (Co Rd 228/Forest Rd 88) which can be accessed 10 miles (16.1 km) southwest of Blanding. This road parallels Hwy 95 between Blanding and Natural Bridges and offers visitors who want to get 'off the beaten path' access to many amazing but lesser-visited hiking trails such as the Dark Canyon Wilderness Area, Arch, Allen, and Hammond Canyons. Elk Ridge Road passes between the Bears Ears Buttes just before rejoining Hwy 95 just outside of Natural Bridges National Monument.





RAFTING

Twisting and turning its way through southeastern Utah, the San Juan River is the perfect place to cool off during the hot summer months. Approximately 100 miles (161 km) of the river is accessible by rafts, canoes and kayaks. Accessible areas of the river are split into two different sections: the upper and the lower. The upper section starts at Bluff and stretches for 27 miles (43.5 km) to Mexican Hat, and the lower section starts at Mexican Hat and travels for 58 miles (93.3 km), ending at Clay Hills near Lake Powell.

Not only do guided river rafting tours take adventurers to unique sites, but they also cover the permits required by local land management agencies. Permits are needed to float all parts of the San Juan River, as well as for hiking or camping on the south side of the river, which is on the Navajo Reservation. Wild Expeditions and Ancient Wayves River & Hiking Adventures are the perfect local guides that will meet all of these permit and adventure needs.

More information found on pg. 62.



SAN JUAN RIVER

It is amazing how much one river can offer visitors looking for adventure. There are three ways to experience the San Juan River. First, you can see the river from above as you overlook its twisting and turning at Goosenecks State Park. Second, adults and children alike can experience the river while rafting through its waters. Local rafting companies guide

visitors through the river in rafts, kayaks, and SUPs that showcase the calm and rapids of the river. Third, you can see world-class petroglyphs, pictographs and archaeological sites leaving a historic record along the San Juan River walls between Bluff and Mexican Hat as you hike, drive, or float through the area.





AREA HIKES

HIKE LOCATIONS	SHORT 2 miles (3.2 km) or less	MODERATE 5 miles (8 km) or less, moderate elevation gain	DIFFICULT 6 miles (9.7 km) or more
CANYONLANDS NATIONAL PARK	<ul style="list-style-type: none"> • Cave Spring • Pothole Point 	<ul style="list-style-type: none"> • Chesler Park • Slickrock Trail 	<ul style="list-style-type: none"> • Chesler Park/Joint Trail • Confluence Overlook • Druid Arch
NATURAL BRIDGES NATIONAL MONUMENT	<ul style="list-style-type: none"> • Owachomo Bridge 	<ul style="list-style-type: none"> • Kachina Bridge • Sipapu Bridge 	<ul style="list-style-type: none"> • Natural Bridges Loop
BEARS EARS NATIONAL MONUMENT /CEDAR MESA	<ul style="list-style-type: none"> • Butler Ruins • Cave Towers 	<ul style="list-style-type: none"> • House on Fire 	<ul style="list-style-type: none"> • Kane Gulch
HOVENWEEP NATIONAL MONUMENT	<ul style="list-style-type: none"> • Rim Trail Loop 	<ul style="list-style-type: none"> • -- 	<ul style="list-style-type: none"> • --

HIKING/BACKPACKING

Hike for hours or days through Utah's Canyon Country all year round. No matter how much time you have, there's a beautiful hike waiting for you to explore. Experience towering needles in Canyonlands National Park, the twisting and turning of the San Juan River in Goosenecks State Park or mountain peaks rising to nearly 13,000 feet in the Manti La Sal National Forest. Visitors backpacking through the area have the opportunity to see more remote areas including Salt Creek in Canyonlands, Grand Gulch on Cedar Mesa, and Dark Canyon stretching from the Abajo Mountains to the Colorado River in Glen Canyon National Recreation Area.





ATV

Four-wheeling through the backcountry trails of San Juan County is the ultimate way to experience the area firsthand. Hire a local All-Terrain Vehicle (ATV), Off-Highway Vehicle (OHV) or Jeep guide to give you a tour of the area.



ATV TRAILS

BY AREA

NORTH OF MONTICELLO

- Hook & Ladder
- Falls Missile

BLANDING

- Arch Canyon
- Elk Ridge
- Shay Ridge

BLUFF

- River House

HALLS CROSSING /HITE

- Piute Pass
- Jacobs Chair
- Hole-in-the-Rock

BIKING

It is common for travelers to hike to different destinations, but have you ever thought of biking through them? Utah's Canyon Country is filled with diverse backroads and trails through canyons, forests and deserts. The scenery along the highways is magnificent for cycling and passes through deserts, mountains, and over plateaus. Due to the varying terrain in the area, a guide is recommended. Don't forget to stop and take photos along the way!

- Abajo Foothills Trail System ● ■
- Bulldog ◆
- Robertsons Pasture ◆
- Shay Ridge ◆
- Spring Creek ●

● Beginner ■ Intermediate ◆ Expert



FISHING

Just as the terrain is diverse, so are the fish in Utah's Canyon Country. Manti La Sal National Forest and Lake Powell among others are great places to go fishing. Local reservoirs are stocked with fish and ready for your next fly or lure. Blanding reservoirs, Monticello Lake and Foy Lake in the Abajo Mountains are great places to find trout. The San Juan River is great for carp and channel catfish. Lake Powell is excellent for striped bass.



HORSEBACK RIDING

Some visitors forgo the vehicles to explore the backcountry on horseback. The Navajo people consider horses an integral part of their culture. Horses for all ability levels are available for tours of Monument Valley. Sunrise and sunset horseback tours allow riders views of the valley with the changing sunlight. Sunset and sunrise tours are exceptional because of the various colors that illuminate the valley.





GOLFING

The Hideout Golf Course in Monticello, Utah has earned recognition as one of the region's premier golf experiences. The golf course showcases a wide variety of scenery year-round. The 18-hole course has different elevations that will challenge your ability. The course also has a driving range, practice greens and a 3-hole junior course for younger golfers. 435-298-8120

ROCK CLIMBING/ CANYONEERING

Explore the canyons and mountains on a whole new level! Utah's Canyon Country is the home to world class climbing and canyoneering. Indian Creek, a world renowned rock climbing destination, is best known for its sandstone crack lines. If traditional climbing is not your game, there are several small hidden climbing gems that dot the region from the La Sals and Abajo Mountains to the red rock canyons around Bluff.

Some of the most beautiful slot canyons are found in the area. From beginner to challenging narrow slots, Utah's Canyon Country has a canyon to be explored at any level.

Whether a beginner or an expert, local guides and outfitters can help put your vertical limits to the test. It is important to remember that alteration of rock surfaces, removal of vegetation and climbing on petroglyphs is destructive and prohibited.





STARGAZING

Those who visit Utah's Canyon Country are often surprised by the magnificence of the region's night skies. The International Dark Sky Association (IDSA) designated Rainbow Bridge National Monument as the fourth Dark Sky Sanctuary in the world. The IDSA defines Dark Sky Sanctuaries as "the most remote (and often darkest) places in the world whose conservation state is most fragile."

Not surprisingly, the IDSA has awarded various dark sky designations to several other locations throughout Utah's Canyon Country. Natural Bridges National Monument, Canyonlands National Park, Hovenweep National Monument and Goosenecks State Park are International Dark Sky Parks — locations with exceptional starry nights that have been protected for scientific, natural, educational, cultural heritage or public enjoyment. Natural Bridges was actually the first location in the world to be named an International Dark Sky Park.



AREAS FOR GREAT STARGAZING

- Canyonlands National Park
- Monument Valley
- Natural Bridges National Monument
- Hovenweep National Monument
- Rainbow Bridge National Monument
- Goosenecks State Park
- Canyon Country Discovery Center



WINTER ACTIVITIES

Utah's Canyon Country offers activities all year-round. In addition to hiking, biking and other activities mentioned, The Abajo (Blue) Mountains offer excellent opportunities for cross-country and backcountry skiing, snowshoeing and snowmobiling. A popular access point is located 5 miles (8 km) west of Monticello on State Road 101/Forest Service Road 105 (accessed by turning west on 200 South on the north side of the Monticello Visitor Center).



MUSEUMS & EDUCATION

While some of the county's history can be learned and viewed outside, there are eight museums where visitors can learn even more about the history of the area. These museums are where the history and legends of the areas can come alive for visitors of all ages. Museum exhibits include many items from dinosaur fossils, Native American artifacts and Pioneer buildings to the present day local quilting guild. Plan to take time to stop at one of these museums on your next trip.



BEARS EARS EDUCATION CENTER/BLUFF

The center aims to teach people from near and far about the natural and cultural landscape of southeastern Utah and how to visit Bears Ears with respect.

Location: 567 W Main **Phone:** 435-414-0343



BLUFF FORT / BLUFF

Explore the sites of the original Bluff Fort built in the late 1800s. Recently built 'Pioneer' cabins and a replica of the original mercantile building are also on the grounds for travelers to view.

Location: 55 N 6 East **Phone:** 435-672-9995



CANYON COUNTRY DISCOVERY CENTER / MONTICELLO

Discover the natural history and landscapes, people and places, land use and energy, astronomy, water, and climate of the Colorado Plateau through hands-on exhibits. The center also houses an observatory, rock-climbing wall, nature playscape, and numerous walking trails.

Location: 1117 N Main **Phone:** 435-587-2156



THE DINOSAUR MUSEUM / BLANDING

Walk through the complete history of the dinosaurs through skeletons, fossilized skin, eggs, footprints, art graphics and realistic sculptures. Enjoy a special exhibit called the Hall of Hollywood Dinosaurs and see how dinosaurs make their appearance in many movies.

Location: 754 S 200 West **Phone:** 435-678-3454



EDGE OF THE CEDARS STATE PARK MUSEUM / BLANDING

Learn about the lifestyle and culture of the Ancestral Puebloan people. The Puebloan lifestyle is shown in many ways including a restored kiva—an underground ceremonial structure— pottery, woven baskets and sandals, and more.

Location: 660 W 400 North **Phone:** 435-678-2238



FRONTIER MUSEUM / MONTICELLO

Ever wonder what life was like on the frontier? Visit an original post-and-beam barn with displays including everyday items used on the edge of the Great Sage Plains.

Location: 216 S Main Street **Phone:** 435-587-3401



GOULDING'S TRADING POST MUSEUM / MONUMENT VALLEY

Stop by the original trading post from the 1920s to see the family residence, a film about the history of the valley, store items on display and more.

Location: County Road 421 **Phone:** 435-727-3225



HOLE-"N"-THE-ROCK / SOUTH OF MOAB

Almost one century ago, a miner and his family carved their home in the cliff. View 14 rooms around huge sandstone pillars created in this unusual living space.

Location: 11037 US-191 **Phone:** 435-686-2250

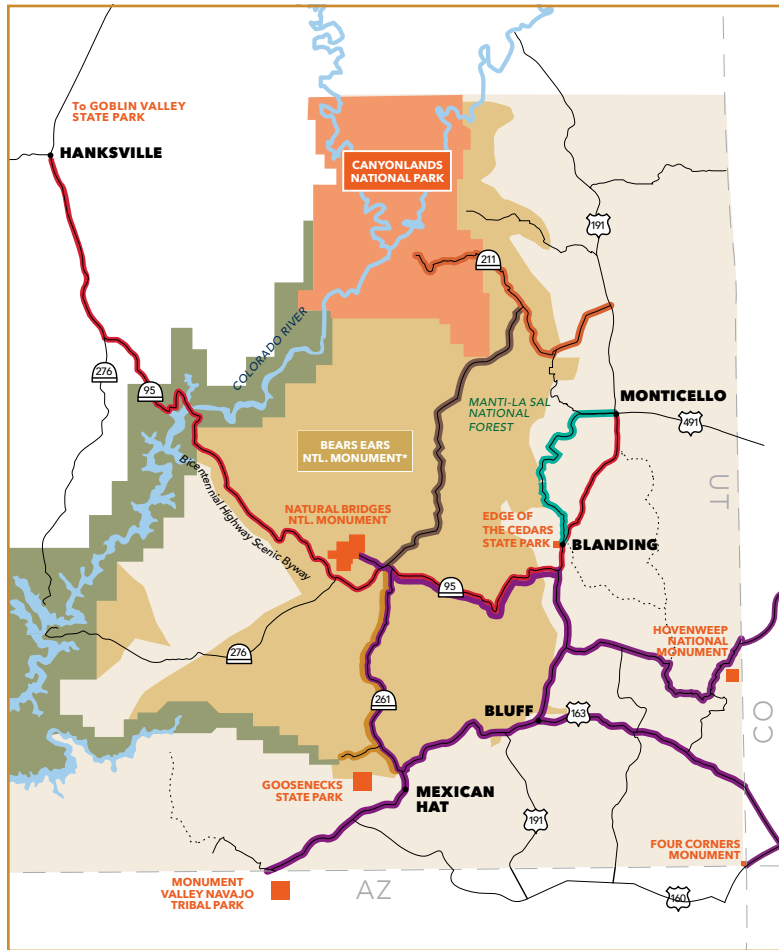


PIONEER PARK / MONTICELLO

Explore this park containing replicas of historic Monticello buildings.

Location: S Main Street

SCENIC BYWAYS/DRIVES



- TRAIL OF THE ANCIENTS SCENIC BYWAY
- MOKI DUGWAY & MULEY POINT
- ABAJO LOOP STATE SCENIC BACKWAY
- HWY-211-INDIAN CREEK TO NEEDLES DISTRICT OF CANYONLANDS NP
- ELK RIDGE STATE SCENIC BACKWAY
- BICENTENNIAL HIGHWAY [SCENIC BYWAY UT-95]



■ TRAIL OF THE ANCIENTS SCENIC BYWAY TIME: VARIES

The Trail of the Ancients Scenic Byway is a network of roads connecting archaeological, cultural, and scenic sites and locations throughout southeastern Utah and southwestern Colorado. Stops along Trail of the Ancients include; Monument Valley Tribal Park, Natural Bridges and Hovenweep National Monuments, Edge of the Cedars and Goosenecks State Parks, as well as several archaeological sites such as Butler Wash and Mule Canyon. For those who wish to visit all the sites along the byway, allow 1-2 days. The best way to experience Trail of the Ancients is on a loop from Monument Valley to UT-261, UT-95, US-191 and US-163 back to Monument Valley. Road conditions vary from paved highways to native surface, some requiring stiff suspension or high clearance vehicles. Many sites are on or within a short distance of a paved road. During stormy weather, local inquiry should be made about road conditions.



MOKI DUGWAY & MULEY POINT TIME: 1 HOUR

The Moki Dugway is literally carved from the cliff face and talus slope on the edge of Cedar Mesa. The route connects UT-95 with US-163 by crossing Cedar Mesa and plunging into the dugway, revealing sweeping views of Valley of the Gods, the deep, entrenched canyon of the San Juan River, and Monument Valley on the southwest horizon. Muley Point is accessed via County Hwy 241, a 5 mile unpaved road off State Hwy 261, located at the top of the Moki Dugway.



HWY-211-INDIAN CREEK TO NEEDLES DISTRICT OF CANYONLANDS NATIONAL PARK TIME: 1.5 HOURS

Drive across the high sage plains before plunging through a series of turns to Newspaper Rock Recreation Site. This road totals 35 miles (56.3 km) long leading visitors from Monticello at the junction of US-191 and US-211 through the Indian Creek area of Bears Ears National Monument and ending at the entrance of the Needles District of Canyonlands National Park. This scenic drive is the perfect way to explore the area, see Native American petroglyphs at Newspaper Rock and picnic before heading to Canyonlands.



ABAJO LOOP STATE SCENIC BACKWAY TIME: 3 HOURS

This scenic byway hugs the base of Abajo Peak and traverses 30 miles (48.3 km) of mountainous terrain. Climbing to 9,000 feet in elevation through the mountains between Monticello and Blanding, the single lane of graded gravel or dirt road is rough and rocky. The route accesses many well-maintained and signed hiking trails of varying difficulty. High clearance and stiff suspension are recommended. The route is impassible during the winter and after rainstorms.



ELK RIDGE STATE SCENIC BACKWAY TIME: 4 HOURS

This 50-mile route begins 25 miles (40.2 km) west of Blanding near the junction of UT-95 and UT-275. Climbing to an elevation of 8,700 feet, the byway ascends to the spine of Elk Ridge. The backway crosses the Blue Mountains and ends in the high desert at UT-211. The route accesses many well-maintained and signed hiking trails of varying difficulty. High clearance and stiff suspension are recommended. The route is impassible during the winter and after rainstorms.



Edge of the Cedars



River House



Edge of the Cedars

NATIVE AMERICAN CULTURAL SITES

Native American history and culture can be found throughout Utah's Canyon Country. Ancient Native American sites showcase petroglyphs, pictographs and archaeological structures. Museums offer visitors the opportunity to view artifacts from the Four Corners region including pottery, woven baskets and projectile points. Goulding's Trading Post Museum in Monument Valley is an original trading post, which provides a glimpse into a bygone era. Newspaper Rock, a 200-square foot (18.5-square meter) rock face located in Indian Creek, exhibits petroglyphs carved by Native Americans over 2,000 years ago. Each location, whether outdoor or indoor, highlights the lifestyle and culture of the Native Americans of this area.



Cave Towers

- ### LOCATIONS
- Edge of the Cedars State Park / Blanding
 - Hovenweep National Monument / UT/CO border near Blanding
 - Butler Wash Ruin / UT-95 near Blanding
 - Cave Towers / UT-95 near Blanding
 - Mule Canyon Kiva / UT-95 near Blanding
 - River House Ruin / County Road 2351 near Bluff
 - Sand Island Petroglyph Panel / near Bluff
 - Big Kachina Panel / near Bluff
 - Newspaper Rock / UT-211 near Monticello.



Hovenweep National Monument



LODGING

BLANDING

ABAJO HAVEN GUEST CABINS

Blue Mt. Road
435-979-3126 • abajohaven.com
Units 4 | 🏠 | 📶 | 🚰 | 🌊

STONE LIZARD LODGE

88 West Center
435-678-3323 • stonelizardlodge.com
Units 17 | 🐾 | 📶 | 🚰

THE BLANDING BUNKHOUSE

Stevens Road
435-459-1537 • blandingbunkhouse.weebly.com
| 🏠 | 🐾 | 📶 | 🚰 | 🚽

RODEWAY INN & SUITES

711 South Main St. (Hwy 191)
435-678-3271 • www.choicehotels.com
Units 52 | 📶 | 🚰 | 🚽 | 🚿 | 🍷

FOUR CORNERS INN

131 East Center (Hwy 191)
800-574-3150 • 435-678-3257
fourcornersinn.com
Units 32 | 🐾 | 📶 | 🚰 | 🚽 | 🚿 | 🍷

PROSPECTOR MOTOR LODGE

591 South Main St. (Hwy 191)
435-678-4022 • prospectormotorlodge.com
Units 19 | 📶 | 🚰

RANCH CABIN

6198 S. Hwy 191
435-220-1050 • canyonlandslodge.com
Units 1 | 🏠 | 🐾 | 📶 | 🚰 | 🚽

CAMP JACKSON

1800 N. Johnson Creek Rd.
435-220-1050 • canyonlandslodge.com
Reunions, Retreats, Group
| 🏠 | 🐾 | 📶 | 🚰 | 🚽 | 🚿

BLUE SAGE INN & SUITES

132 S Main St.
435-220-0299 • bluesageinn.com
Units 8 | 🐾 | 📶 | 🚰 | 🚽 | 🚿 | 🍷

ARCH CANYON INN

755 S Main St.
435-678-3880 • archcanyoninnblanding.com
Units 59 | 🐾 | 📶 | 🚰 | 🚽 | 🚿 | 🍷

BEARS EARS INN

34 E Center St
(435) 270-4760 • thebearsarsinn.com
Units 58 | 📶 | 🚰 | 🚽 | 🚿 | 🍷

BLUFF

BLUFF GARDENS CABINS

550 East Main St.
800-595-7607 • thebluffgardens.com
Units 13 | 📶 | 🚰 | 🚽

CANYON WREN BED & BREAKFAST

323 North 6th East
435-459-0160 • 970-382-1642
canyonwrenbnb.com
| 📶 | 🚰

COTTONWOOD CABINS

Highway 191
435-672-2287
Units 7 | 🐾 | 📶 | 🚰 | 🚽 | 🚿

LA POSADA PINTADA

Navajo Twins Drive
435-459-2274 • laposadapintada.com
Units 10 | 📶 | 🚰 | 🚽 | 🚿

DESERT ROSE RESORT & CABINS

701 W. Main St., (Hwy 191)
888-475-7673 • 435-672-2303
desertroseinn.com
Units 52 | 📶 | 🚰 | 🚽 | 🚿 | 🍷 | 🏠

KOKOPELLI INN

160 East Highway 191
435-672-2322 • kokoinnutah.com
Units 26 | 🐾 | 📶 | 🚰 | 🚽 | 🚿

MOKEE MOTEL

5th West & Hwy 191
435-672-2242
Units 7 | 📶 | 🚰

RECAPTURE LODGE

260 E. Main St. (Hwy 191)
435-672-2281 • recapturelodge.com
Units 26 | 🐾 | 📶 | 🚰 | 🚽 | 🚿

WILLOW STREET COTTAGES

65 Willow St.
435-485-0318
Units 2 | 🐾 | 📶 | 🚰 | 🚽 | 🚿 | 🍷

BLUFF DWELLINGS RESORT

2625 S. Highway 191
435-670-4514 • bluffdwellings.com
Units 58 | 📶 | 🚰 | 🚽 | 🚿 | 🍷 | 🏠

LAKE POWELL

HALLS CROSSING MARINA

Highway 276
800-528-6154 • 435-684-7000
lakepowell.com
Family Units - Reservations Only
Units 10 | 🐾 | 🚰 | 🚽 | 🚿

HITE MARINA

Highway 95
435-233-6822 • ticaboo.com
Stationary RV Rentals
Units 3 | 🐾 | 🚰 | 🚽

MEXICAN HAT

CANYONLANDS MOTEL

Highway 163
435-683-2230
Units 10 | 🏠 | 🍷

HAT ROCK INN

Highway 163
435-683-2221
hatrockinn.com
Units 40 | 🐾 | 📶 | 🚰 | 🚽 | 🚿 | 🍷 | 🏠

MEXICAN HAT LODGE

Highway 163
435-683-2222
mexicanhatlodge.com
(Seasonal Entertainment)
Units 10 | 🏠 | 📶 | 🚰 | 🚽 | 🚿 | 🍷 | 🏠

SAN JUAN INN

(yurts & house)
Hwy 163 @ the Historic Bridge
800-447-2022 • 435-683-2220
sanjuaninn.net
Units 36 | 🐾 | 📶 | 🚰 | 🚽 | 🚿 | 🍷

VALLEY OF THE GODS B&B

County Road 242
970-749-1164
By Reservation Only
Units 4 | 🚰



ULUM

🐾 Horse Stables | 🐾 Pet Friendly | 📶 Wireless | 🚰 Accessible | 🏊 Pool |
🔌 EV Charging | 🍳 Microwave, Refrigerator, In-Room Coffee, and/or Continental Breakfast
🍷 Restaurant - on premises or within walking distance OR meals are available

MONTICELLO

ABAJO LODGE

197 E. Center St
435-587-2261 • abajolodge.com
Units 35 | 🐾 | 📶 | ♿ | 🍷

ATOMIC BLUE MOTOR INN

232 N. Main St. (Hwy 191)
435-587-2251 • atomicblue.com
Units 24 | 🐾 | 📶 | 🏠

BLUE MOUNTAIN VACATIONS

21 Pine View Rd
435-429-2693 • bluemountainvacations.net
Units 3 | 🐾 | 📶 | 🏠

CANYONLANDS LODGING

6198 South Highway 191
435-220-1050 • canyonlandslodging.com
Reunions, Retreats, Groups
Units 21 | 📶 | 🐾 | 📶 | ♿ | 🏠

CANYONLANDS MOTOR INN

197 N. Main St. (Hwy 191)
435-587-2266 • canyonlandsutah.com
Units 32 | 📶 | 🏠

CANYONLANDS DOME RESORT

N Crk Ln
801-420-0572 • canyonlanddomes.com
Units 9 | 🐾 | 📶 | 🏠

GRIST MILL INN

64 South 300 East
435-587-2597 • thegristmillinn.com
Units 7 | 📶 | 🏠 | 🍷

INDIAN CANYON RANCH

48 Rosie Lane, Monticello
626-533-5529 • indiancanyonranch.com
Units 6 | 🐾 | 📶 | 🏠

INN AT THE CANYONS

533 N. Main St. (Hwy 191)
435-587-2458 • monticellocanyonlandsinn.com
Units 43 | 📶 | ♿ | 🍷 | 🏠 | 🍷

THE MONTICELLO INN

164 E. Center St. (Hwy 491)
435-587-2274 • themonticelloinn.com
Units 26 | 🐾 | 📶 | 🏠 | 🍷

RODEWAY INN & SUITES

649 N. Main St. (Hwy 191)
435-587-2489 • rodeWAYinn.com
Units 40 | 📶 | ♿ | 🍷 | 🏠

MONUMENT VALLEY

FIRETREE B&B

County Road 420
435-727-3228 • firetreeinn.com
Units 1 | 🏠 | 🍷

NORTH COUNTY

3 STEP HIDEAWAY

2430 Lisbon Valley Rd, La Sal
435-249-5567 • 3stephideaway.com
Units 7 | 🐾 | 📶 | 🏠

BASE CAMP

Hurrah Pass Road
435-260-1783 • basecampadventurelodge.com
Units 11 | 📶 | 🍷

COYOTE CABINS

La Sal Mt. Loop Road
888-820-8525 • coyotecabinrentals.com
Units 10 | 🐾

CROOKED BINDI RANCH

4040 Kane Creek Blvd
801-440-4498 • crookedbindiranch.com
Units 2

FUNSTAYS REDROCK PARK

11830 US Hwy 191, Moab
435-210-4077 • funstaysredrock.com
Units 6 | 📶 | 🏠

HIDDEN OAKS LODGE

51 North Buckeye Road
(435) 459-9505 • hiddenoakslodge.com
Retreats, Reunions, Groups
Units 5 | 📶 | 🐾 | 📶 | ♿ | 🏠

MOAB GUEST RANCH

La Sal Mtn Loop Road
888-879-6622 • packcreekranch.com
Units 5 | 🐾 | 🍷

MOUNT PEALE COUNTRY INN & CABINS

1415 E Highway 46, La Sal
435-686-2284 • mountpealecountryinncabins.com
Units 6 | 📶 | 🏠

FUNSTAYS REDROCK PARK

11830 US Hwy 191, Moab
435-210-4077 • funstaysredrock.com
Units 6 | 📶 | 🏠

PACK CREEK RANCH

La Sal Mtn Loop Road
800-505-5343 • packcreekranch.org
Units 5 | 🐾 | 🍷 | 🏠

RED DESERT RV PARK

5501 South Highway 191, Moab
435-260-7674 • reddesertvrvpark.com
Units 14 | 🐾 | 📶 | 🏠

WOLF SPRINGS RANCH CABINS & RETREAT

1000 E. Wolf Springs Ranch Rd. La Sal, UT
435-260-8332 • WolfSpringscabinrentals.com
Units 12 | 📶 | 🐾 | 📶 | 🏠

GLAMPING CANYONLANDS

66 West, UT-211
727-385-5438 • glampingcanyonlands.com
7 Units | Outdoor communal kitchen

ULUM

147 S Looking Glass Rd, La Sal, UT
888-969-4858 • ulumresorts.com
| 🐾 | 📶 | ♿ | 🍷 | 🍷 | 🏠 | 🍷

MEXICAN HAT LA SAL BLUFF BLANDING

COMMERCIAL CAMPGROUNDS

	HOOK-UPS	TENT SITES	MAX FT. LENGTH	WIRELESS	GROUP SITES	PETS ALLOWED	OPEN ALL YEAR	PULL THROUGH	SHOWERS
BLUE MOUNTAIN RV PARK 1888 South Highway 191 435-678-7840 • bluemountainrvpark.com	26	15	40	•	•	•	•	•	•
BLANDING RV PARK 861 South Highway 191 435-678-2991 • blanding-rv-park.business.site	52	16	40	•		•	•	•	•
SUNSET CAMPGROUND 692 CR 232 • 435-459-1109 blandingsunsetcampground.com	10	60				•			
CADILLAC RANCH RV PARK East Highway 191 435-210-8933 • cadillacranchrvparkutah.com	15	15		•		•	•	•	•
COTTONWOOD RV PARK West Highway 191 435-672-2287 • cottonwoodrvpark.blogspot.com	21	3	80	•		•		•	•
CORAL SANDS RV PARK 94 South 6th West 970-397-1955 • 435-672-2232 • coralssandrsv.com • Covered Wagon	36		80	•		•	•	•	
COYOTE SPRINGS RV PARK 45 E Markle 385-286-0308 • coyotespringsrv.com	14		60			•		•	
WOLF SPRING RANCH CABINS & RETREAT 1000 E. Wolf Springs Ranch Rd • 435-260-4964 • wolfspringscabinrentals.com	8	12	35	•		•			•
MEXICAN HAT ROCKS Hwy 163, 2 mi north of Mexican Hat 435-683-2221 • mexicanhatrocks.com (Dispered camping sites)					4	•	•	•	
VALLE'S RV PARK Highway 163 435-683-2226	15					•	•	•	•
INDIAN CANYON RANCH 48 Rosie Lane 626-533-5529 • indiancanyonranch.com		2	30	•	•	•			•
MOUNTAIN VIEW RV PARK 632 North Main St. (Hwy 191) 435-587-2974 • mountainviewutah.com	29	5	70	•		•	•	•	•
WESTERNER RV/TRAILER PARK 516 South Main St. (Hwy 191) 435-587-2762 • oldwestrvutah.com	28		70	•		•	•	•	•
OLD WEST RV 348 South Main St. (Hwy 191) 435-610-1499 • oldwestrvutah.com • Glamping Tents	20		30	•		•		•	•
GEMSTONE CAMPGROUND 120 S Hallers Rd 435-979-6498 • gemstonecampground.com		11	30		1	•		•	
MONUMENT VALLEY KOA Mile Post 2, Hwy 163 435-459-0477 • 800-562-3424 • koa.com	56	5	75	•		•		•	•
SLEEPING BEAR CAMPGROUND 5 Miles North of Gouldings Jct CR 89/Douglas Mesa Rd • 435-444-7777			30			•	•	•	
AREA BFE 1 Strike Ravine Safari Route, Moab 719-647-2297 • 719-821-3818 • areabfe.com		100				•	•	•	
NEEDLES OUTPOST 1.5 miles from the Needles District of Canyonlands on Hwy 211 • 435-459-0777 • needlesoutpost.com	26	42		•	•	•		•	•
RED DESERT RV PARK 5501 South Highway 191, Moab 435-260-7674 • reddesertvrvpark.com	58	5	70	•		•		•	•
ROUGHLOCK RESORT 8 Miles north on Hwy 191 435-587-2351 • canyonlandsbestkeptsecret.com	6	8	36			•	•	•	

PUBLIC CAMPGROUNDS

		TOILETS	SHOWERS	MAX FT. LENGTH	NUMBER OF SITES	GROUP SITES	PETS ALLOWED	OPEN ALL YEAR	PICNIC TABLES
--	--	---------	---------	----------------	-----------------	-------------	--------------	---------------	---------------

CANYONLANDS NATIONAL PARK

nps.gov/cany

NEEDLES CAMPGROUND 435-719-2100 (Gen. Info.) 435-259-4711 (Dist. Specific) nps.gov/cany	35 miles west on Utah Hwy 211 from junction w/US Hwy 191 north of Monticello	•		28	26	•	•	•	•
WILLOW FLAT CAMPGROUND 435-719-2100 (Gen. Info.) 435-259-4711 (Dist. Specific) nps.gov/cany	41 miles west on Utah Hwy 313 from junction w/US Hwy 191 north of Moab	•		28	12	•	•	•	•

DEAD HORSE POINT STATE PARK

Reservations accepted 800-322-3770 • stateparks.utah.gov/reservations

KAYENTA CAMPGROUND 435-259-2614 stateparks.utah.gov	30 miles west on Utah Hwy 313 from junction w/US Hwy 191 north of Moab	•		30	21		•	•	•
WINGATE CAMPGROUND 435-259-2614 stateparks.utah.gov		•		56	21		•	•	•
YURTS 435-259-2614 stateparks.utah.gov		•			9			•	•

GLEN CANYON NATIONAL REC. AREA - LAKE POWELL

nps.gov/glca

HALLS CROSSING MARINA 435-684-7009 nps.gov/glca	95 miles southwest of Blanding on Hwy 276	•	•	-	64	•	•	•	•
HITE MARINA 435-233-6822 ticaboo.com ADA accessible sites available	80 miles northwest of Blanding on Hwy 95	•	•	80	76	•	•	•	•

GOOSENECKS STATE PARK

stateparks.utah.gov/parks/goosenecks

GOOSENECKS STATE PARK 435-678-2238 stateparks.utah.gov - Primitive Camping	8 miles west on Utah Hwy 316 at junction with Utah Hwy 261 - 4 miles north of Mexican Hat	•			7		•	•	•
---	---	---	--	--	---	--	---	---	---

HOVENWEEP NATIONAL MONUMENT

nps.gov/hove

HOVENWEEP CAMPGROUND 970-562-4282 nps.gov/hove	20 miles north of Aneth off Utah Hwy 262	•		36	31		•	•	•
--	--	---	--	----	----	--	---	---	---

NATURAL BRIDGES NATIONAL MONUMENT

nps.gov/nabr

NAT. BRIDGES CAMPGROUND 435-692-1234 nps.gov/nabr	29 miles west of Blanding on Utah Hwy 95	•		26	13		•	•	•
---	--	---	--	----	----	--	---	---	---

PUBLIC CAMPGROUNDS

		TOILETS	SHOWERS	MAX FT. LENGTH	NUMBER OF SITES	GROUP SITES	PETS ALLOWED	OPEN ALL YEAR	PICNIC TABLES
--	--	---------	---------	----------------	-----------------	-------------	--------------	---------------	---------------

BUREAU OF LAND MANAGEMENT

blm.gov/ut

COMB WASH CAMPGROUND 435-587-1500 blm.gov/utah/monticello	12 miles west of Blanding on Utah Hwy 95 - Primitive Camping	•			20		•	•	
CREEK PASTURE CAMPGROUND 435-587-1500 blm.gov/utah/monticello	Take Hwy 191 for 14 miles N of Monticello, then 30 miles west on 211	•			32		•	•	•
HAMBURGER ROCK CAMPGROUND 435-587-1500 blm.gov/utah/moab	Take Hwy 191 for 14 miles N of Monticello, then 30 miles west on 211, then 1 mile on 122 - Primitive Camping	•		60	10		•	•	•
HATCH POINT CAMPGROUND 435-259-2100 blm.gov/utah/moab	Canyon Rims Recreation Area 20 miles north of Monticello & 25 miles west off US Hwy 191 on County Road 133 - Primitive Camping	•		30	10		•	•	•
SAND ISLAND CAMPGROUND 435-587-1500 blm.gov/utah/monticello	3 miles west of Bluff on US Hwy 191	•		50	25		•	•	•
SUPER BOWL CAMPGROUND 435-587-1500 blm.gov/utah/monticello	Take Hwy 191 for 14 miles N of Monticello, then 30 miles west on 211	•			37		•	•	•
WINDWHISTLE CAMPGROUND 435-259-2100 blm.gov/utah/moab	Canyon Rims Recreation Area 20 miles north of Monticello & 6 miles west off US Hwy 191 on County Road 133 - Primitive Camping	•		30	15		•	•	•

US FOREST SERVICE MANTI-LA SAL NAT'L FOREST

Reservations accepted for all sites at 435-587-2041 (USA) or www.fs.fed.us/r4/mantilasal

BUCKBOARD CAMPGROUND 435-587-2041 fs.fed.us/r4/mantilasal	6.5 miles west of Monticello on 200 South St. (@ the Welcome Ctr)	•		30	8		•	•	•
DALTON SPRINGS CAMPGROUND 435-587-2041 fs.fed.us/r4/mantilasal	5 miles west of Monticello on 200 South St. (at the Welcome Center)	•		30	16		•	•	•
DEVIL'S CANYON CAMPGROUND 435-587-2041 fs.fed.us/r4/mantilasal	9.5 miles northeast of Blanding on Hwy 191.	•		60	42		•	•	•
NIZHONI CAMPGROUND 435-587-2041 fs.fed.us/r4/mantilasal	12 miles north of Blanding on Blue Mtn Road	•		35	19		•	•	•



DINING

BLANDING

A&W RESTAURANT

12 West Center St. (Hwy 191)
435-678-3900
Fast Food

BLUE MOUNTAIN BISTRO

802 S 200 W
435-678-4835
Cafeteria

CREAMY DELIGHTS

26 Main St.
435-485-0635
Ice cream • Baked goods • Lunch specials

DESTINATION AWAKE COFFEE & BAKERY

87 S Main St.
435-485-8102
Coffee • Baked goods

DIRTY POP

174 E Center St
Mixed Sodas & Cookies

HOMESTEAD STEAKHOUSE

121 East Center St. (Hwy 191)
435-678-3456
Restaurant

HUNT'S TRADING

146 East Center St. (Hwy 191)
435-678-2739
Coffees & Teas

PATIO DINER

95 North Grayson Pkwy. (Hwy 191)
435-678-2177
Fast Food

SUBWAY SANDWICH

82 South Main St. #2 (Hwy 191)
435-678-3616
Fast Food

USU SIDEWALK GRILL

576 W 200 S
435-678-2201
Cafeteria

YAK'S CENTER STREET CAFE

140 North Grayson Pkwy (Hwy 191)
435-678-2555
Restaurant

BLUFF

CEDAR SHACK CAFE

2625 S Hwy 191
435-672-2319
Cafe w/outdoor seating • Espresso

COMB RIDGE EAT & DRINK

409 Main St. Hwy 191
435-487-8441
Coffee & Bistro • Beer/Wine

COW CANYON COFFEE

163 Mission Road
(435) 749-1036
Coffee • Tea • Baked goods

DUKE'S

701 West Main St.
435-672-2303
Restaurant

CANYON SMOKEHOUSE

281 E Main St.
435-269-0400
Restaurant • BBQ • Beer & Wine

PICADILLY PIZZA at K&C Gas/Convenience

West Highway 191
435-672-2221
Fast Food

TWIN ROCKS CAFE

913 East Navajo Twins Dr.
435-672-2341
Restaurant • Regional Food & Wine

MEXICAN HAT

MEXICAN HAT SHELL

Highway 163
435-683-2220
Packaged & Fast Food

OLDE BRIDGE GRILL

Highway 163 @ the Historic Bridge
435-683-2220
Restaurant

SWINGIN' STEAK

Highway 163
435-683-2222
Restaurant • Cook-outs • Beer & Wine

MONTEZUMA CREEK

THE PIT STOP

7MF8+4M Montezuma Creek
505-210-2497
Food truck • Burgers • Sandwiches

MONTICELLO

7-11

17 North Main St. (Hwy 191)
435-587-2555
Fast Food

DOUG'S BBQ

496 North Main St. (Hwy 191)
435-210-4441
BBQ • Catering • To-go • Beer, Wine & Spirits

GUSTAVO'S

216 East Center (Hwy 491)
435-298-8270
Mexican • Beer & Wine

HIGH DESERT CAFE

516 North Main St. (Hwy 191)
435-210-4441
Coffee Bar • Cafe • Restaurant

JA-ROEN THAI

380 S Main
435-587-4000
Thai • Sushi • Boba

MAVERIK COUNTRY STORE

265 East Center (Hwy 491)
435-587-3238
Fast Food

PIN UP GIRL CAFE & BOUTIQUE

232 N Main St
435-587-2251
Coffee • Baked goods

SHAKE SHACK

364 N Main St.
435-459-2394
Fast Food • Seasonal-Summer

SUBWAY

481 North Main St.
435-587-2757
Fast Food

THATZZA PIZZA

201 S Main
435-587-9111
Restaurant • Delivery

THE OVER BITE

133 E Center (Hwy 491)
801-209-9611
Breakfast • Sandwiches • Smoothies • Coffee

WAGON WHEEL PIZZA

154 S Main
435-587-2766
Restaurant

MONUMENT VALLEY

STAGECOACH RESTAURANT

Gouldings Lodge, County Road 421
435-727-3231
Restaurant • Cook-outs

GOULDINGS C-STORE & DELI

County Road 421
435-727-3231
Fast food • Espresso & Coffee

VENDOR VILLAGE

Intersection of County Rd 421 and US Hwy 163
A variety of food vendors

NORTH COUNTY

STUDEBAKER STATION

La Sal Junction (Hwy 191 & Hwy 46)
719-205-3517
Food truck • Burgers • Sandwiches

GUIDES & OUTFITTERS

	4-WHEEL DRIVE TOURS	ARCHAEOLOGICAL TOURS	ATV/UTV	BACKPACKING	MT. BIKING/BIKE PACKING	BOATING TOURS	CAMPING	CANYONEERING/CLIMBING	EDUCATION TOURS	GUIDED HUNTING/FISHING	HIKING	HORSEBACK RIDING	MONUMENT VALLEY	MYSTERY VALLEY	PHOTOGRAPHY TOURS	RAFTING	RENTALS	SHUTTLES	SCENIC TOURS	TRADITIONAL NAVAJO MEAL	WILDLIFE TOURS	SNOWMOBILE TOURS
--	---------------------	----------------------	---------	-------------	-------------------------	---------------	---------	-----------------------	-----------------	------------------------	--------	------------------	-----------------	----------------	-------------------	---------	---------	----------	--------------	-------------------------	----------------	------------------

BLANDING

SUNRISE OUTFITTING 976 S Main sunriseoutfitting-scenicadventures.com 435-459-9676	•	•	•	•					•	•	•				•						•	
---	---	---	---	---	--	--	--	--	---	---	---	--	--	--	---	--	--	--	--	--	---	--

BLUFF

SAN JUAN SHUTTLES 435-672-2455 valssanjuanshuttles.com																		•				
WILD EXPEDITIONS 101 Main Street riversandruins.com 435-672-2244	•	•	•	•			•				•				•	•	•	•				

LAKE POWELL

LAKE POWELL RESORTS lakepowell.com 800-528-6154 435-684-7000 • 435-684-2278					•																	
--	--	--	--	--	---	--	--	--	--	--	--	--	--	--	--	--	--	--	--	--	--	--

MONTICELLO

BLUE MOUNTAIN HUNTS bluemountainhunts.com 435-587-2113										•												
CANYON CO. DISCOVERY CENTER 1117 N Main St • ccdiscovery.org 800-525-4456 • 435-587-2156									•	•					•							
D'S ADVENTURES 25 Pearson Rd, Eastland 435-260-9930												•										
ROAM INDUSTRY roamutah.com • 435-590-2741				•		•	•									•	•					

MONTEZUMA CREEK

ANCIENT WAYVES RIVER AND HIKING ADVENTURES 505-239-8505 tourancientwayves.com	•	•								•					•	•				•		
--	---	---	--	--	--	--	--	--	--	---	--	--	--	--	---	---	--	--	--	---	--	--

GUIDES & OUTFITTERS

	4-WHEEL DRIVE TOURS	ARCHAEOLOGICAL TOURS	ATV/UTV	BACKPACKING	MT. BIKING/BIKE PACKING	BOATING TOURS	CAMPING	CANYONEERING/CLIMBING	EDUCATION TOURS	GUIDED HUNTING	HIKING	HORSEBACK RIDING	MONUMENT VALLEY	MYSTERY VALLEY	PHOTOGRAPHY TOURS	RAFTING	RENTALS	SHUTTLES	SCENIC TOURS	TRADITIONAL NAVAJO MEAL	WILDLIFE TOURS	SNOWMOBILE TOURS
--	---------------------	----------------------	---------	-------------	-------------------------	---------------	---------	-----------------------	-----------------	----------------	--------	------------------	-----------------	----------------	-------------------	---------	---------	----------	--------------	-------------------------	----------------	------------------

NORTH COUNTRY

AREA BFE areabfe.com 719-647-2297 • 719-821-3818				•																		•
BIGHORN MOUNTAIN BIKING bighornmountainbiking.com 435-200-5871					•																	•
CANYON COUNTRY UTV RENTALS canyoncountryutvrentals.com 435-260-6696																						•
ELK MOUNTAIN RANCH elkmountainranchriding.com 970-260-4503												•										
REDD RANCHES GUIDES rrgothunting.com • 435-459-4930										•												
MOUNTAIN JOE'S TRAIL RIDES Wolf Springs Ranch, Old La Sal mountainjoestrailrides.com 435-669-6585												•										
GS3 OUTFITTERS 1801 Rollover Ranch Rd, La Sal Gs3outfitters.com • 435-260-9569				•																		
SLICK ROCK OFF ROAD RENTALS & AUTO SPA slickrockoffroadrental.com 435-210-4359																						•
SNOWMOBILE MOAB snowmobilemoab.com 970-390-1841																						•



GUIDES & OUTFITTERS

4-WHEEL DRIVE TOURS	ARCHAEOLOGICAL TOURS	ATV/UTV	BACKPACKING	BIKE PACKING	BOATING TOURS	CAMPING	CANYONEERING/CLIMBING	EDUCATION TOURS	GUIDED HUNTING	HIKING	HORSEBACK RIDING	MONUMENT VALLEY	MYSTERY VALLEY	PHOTOGRAPHY TOURS	RAFTING	RENTALS	SHUTTLES	SCENIC TOURS	TRADITIONAL NAVAJO MEAL	WILDLIFE TOURS
---------------------	----------------------	---------	-------------	--------------	---------------	---------	-----------------------	-----------------	----------------	--------	------------------	-----------------	----------------	-------------------	---------	---------	----------	--------------	-------------------------	----------------

MONUMENT VALLEY

Tour Name	4-Wheel Drive	Archaeological	ATV/UTV	Backpacking	Bike Packing	Boating	Camping	Canyoneering	Education	Guided Hunting	Hiking	Horseback Riding	Monument Valley	Mystery Valley	Photography	Rafting	Rentals	Shuttles	Scenic	Traditional Navajo Meal	Wildlife
BENNETT TOURS members.tripod.com/bennett_tour 435-727-3283	•									•		•									
BLACKWATER TOURS blackwatertours.com 435-727-3312	•												•								
DANIEL'S GUIDED TOURS danielsguidedtours.com 435-727-3227													•	•							
EXPLORE MONUMENT VALLEY TOURS exploremonumentvalley.com 928-429-1959	•												•	•	•						•
GOULDINGS LODGE & TOURS 1000 Gouldings Trading Post Rd gouldings.com • 435-727-3231													•	•							
HOMELAND TOURS 800-388-5613 • 435-727-3466												•	•								•
MAJESTIC MONUMENT VALLEY TOURING COMPANY majesticmonumentvalley.com 435-727-3432													•	•							
MONUMENT VALLEY TRIBAL TOURS monumentvalleytribaltours.com 928-814-7114	•												•	•	•						•
MOONLIGHT SPRINGS TOURS thenavajoway.com			•										•								•
MONUMENT VALLEY TOURS monumentvalleytours.net 435-727-3313 • 435-727-3266	•									•			•								
NAVAJO COUNTRY TRAILRIDES 435-727-3390													•	•							
SACRED MONUMENT TOURS monumentvalley.net 435-459-2501 • 435-727-3218	•												•	•							
SANDSTONE TOURS sandstonetours.com 435-200-5450	•												•	•							
SIMPSON'S TRAILHANDLER TOURS emonumentvalley.com 435-727-3362	•									•		•									•



OUR COMMUNITIES

LA SAL

Elevation: 7,125 ft (2,134 m) **Population:** 300

La Sal is an unrivaled outdoor playground offering recreation opportunities throughout the year. Dirt roads lead to some of the best camping in Utah. The name of the village is attributed to Spanish traders as early as 1750 who referred to the snow-capped peaks. During the winter cross-country ski and snow-shoe trails lead to adventure. In the summer the proximity of the desert and mountain offers unlimited hiking, biking, and ATViing opportunities. Popular day tours include Arches and Canyonlands National Parks, Dead Horse Point State Park, Canyon Rims Recreation Area, Manti-La Sal National Forest, and Looking Glass Arch. Lodging, dining, and tours are available. More information at utahscanyoncountry.com/la-sal

MONTICELLO

Elevation: 7,069 ft (2,155 m) **Population:** 2,000

Sheltered by the Abajo Mountains, Monticello is a cool and peaceful summer get-away. The Hideout Golf Course offers visitors a pleasant 18 hole links-style course with no crowds and perfect summer temperatures for an enjoyable round. A variety of tournaments are held throughout the summer. Popular day tours include Canyonlands National Park, Canyon Rims Recreation Area, Manti-La Sal National Forest, Needles, and Anticline Overlooks. Lowry Ruin, the Anasazi Heritage Center, and Mesa Verde National Park are all nearby in Colorado. Monticello is a center for hunting in the fall. Full services. MonticelloUtah.org

BLANDING

Elevation: 6,000 ft (1,830 m) **Population:** 3,600

Blanding, 'Base Camp to Adventure,' is the gateway to the Trail of the Ancients National Scenic Byway which encompasses Natural Bridges and Hovenweep National Monuments, Goosenecks State Park, and Monument Valley Navajo Tribal Park. Edge of the Cedars State Park & Museum offers ancient Puebloan artifacts and an accessible ruin. Look into the distant past as you move among life-size realistic dinosaur models, fossils, and skeletons at the Dinosaur Museum. Popular day tours include the Trail of the Ancients, Edge of the Cedars State Park, Natural Bridges and Hovenweep National Monuments, Grand Gulch Primitive Area, Goosenecks State Park, Monument Valley Navajo Tribal Park, and Glen Canyon National Recreation Area/Lake Powell. Full services. visitblanding.com

OUR COMMUNITIES - CONTINUED

BLUFF

Elevation: 4,380 ft (1,335 m) **Population:** 300

The modern community of Bluff was founded by Mormon settlers who pioneered the Hole-in-the-Rock Trail. The original fort, Bluff Fort Historic Site, is still partially standing, and Victorian-era homes, some on the National Register of Historic Places, provide a sense of life at the turn of the 20th century. Sand Island, with its many figures of Kokopelli, the humped back flute player of ancient southwest mythology is easily accessible. Bluff is the site of the annual Bluff International Balloon Festival in January, Bluff Arts Festival in October, and Annual Winter Solstice Celebration in December. Popular day tours include Natural Bridges and Hovenweep National Monuments, Monument Valley Navajo Tribal Park, Canyonlands and Mesa Verde National Parks, Grand Gulch Primitive Area, and the San Juan River. Full services available. bluffutah.org

MEXICAN HAT

Elevation: 4,244 ft (1,294 m) **Population:** 110

Named for the inverted stone sombrero northeast of the town, Mexican Hat boasts a colorful history. Early in the last century, over 1,000 people looked for gold, oil, and uranium here. Today, the town is a popular starting and ending point for adventures on the San Juan River. Popular day tours include Grand Gulch Primitive Area, John's and Slickhorn Canyons, Goosenecks State Park, Valley of the Gods, Natural Bridges, Hovenweep, Navajo National Monuments, and Monument Valley Navajo Tribal Park. Full services available. More information at utahscanyoncountry.com/Mexican-Hat

MONUMENT VALLEY

Elevation: 5,200 ft (1,585 m)

The spectacular scenery of Monument Valley Navajo Tribal Park is captivating year-round. Available services include a visitor center, campground, and restaurant in addition to guided tours. Gouldings Lodge, on the opposite side of the valley, provides lodging, dining, tours with Navajo guides, a museum, a gift shop featuring hand-crafted Native American items, a fully stocked grocery store, and a campground. A permit from Navajo Parks & Recreation or traveling with a Navajo guide is necessary to explore the depths of the valley. Popular self-guided day tours include Valley of the Gods, Goosenecks State Park, Glen Canyon National Recreation Area, Natural Bridges and Hovenweep National Monuments. navajonationparks.org or gouldings.com

Other communities with no visitor services: Aneth, Eastland, Ucolo, Montezuma Creek, Navajo Mountain, and White Mesa. All are included on our website:

utahscanyoncountry.com

AIRPORT INFORMATION

Hiking is one thing, but seeing Utah's Canyon Country from the air is another! Many airports all over the county are open for public use. Airports in the area are smaller facilities that don't support commercial flights. Contact the nearest airport for further information.



MONTICELLO AIRPORT

- open to the public

Elevation: 6,966 ft (2,123 m)

Runway: 6,000 ft (1,828 m) paved and lighted

Located three miles north of Monticello City, The Monticello Airport offers a courtesy vehicle and pilot's lounge. Jet A and 110LL Avgas fuel are available seven days a week. **435-587-2271**

BLANDING MUNICIPAL AIRPORT - open to the public

Elevation: 5,868 ft (1,789 m) **Runway:** 5,781 ft (1,762 m) paved and lighted

The Blanding Municipal Airport is located one mile south of Blanding City. With both instrument and visual approach equipment, this airport is also equipped with a Unicom Advisory Station. Jet fuel and standard aviation fuel are available seven days a week. **435-678-2791**

BLUFF AIRPORT - open to the public

Elevation: 4,476 ft (1,364 m) **Runway:** 3,000 ft (914 m) asphalt

The Bluff Airport (66V) is located four miles southwest of Bluff, Utah. Tie down services are available for planes. **435-587-3223**

CAL BLACK AIRPORT AT HALLS CROSSING - open to the public

Elevation: 4,394 ft (1,339 m) **Runway:** 5,700 ft (1,737 m) asphalt

Located on UT-276, ten miles east of Hills Crossing Marina on Lake Powell, this airport offers a shuttle to the marina. The terminal building is staffed 24-hours a day and provides twenty tie downs, but no hangar facility. Lo Lead, Jet A and automobile fuels are available. **435-419-0867**

MONUMENT VALLEY AIRPORT - private

Elevation: 5,192 ft (1,583 m) **Runway:** 4,000 ft (1,219 m) asphalt

The Monument Valley Airport, although private, allows free use if staying at or using the Goulding Lodge, campground or store. Please contact the airport to request permission to land prior to your trip. **435-727-3225**

BACKCOUNTRY AIRSTRIPS

Various backcountry airstrips are scattered throughout the region including Fry Canyon UT-74, Dark Canyon and Needles. Conditions of backcountry airstrips are dependent on weather and the environment. Make appropriate preparations and use caution when using these airstrips in your travel plans.

VISITOR INFORMATION

Visitor information is available from the national, state, and tribal parks. Visitor centers in Blanding, Bluff, and Monticello are stocked with brochures, maps, books, videos, and mementos. The centers are staffed by knowledgeable local residents who will assist with information to make your visit exceptional.

BLANDING VISITOR CENTER

12 North Grayson Parkway (Us Highway 191)
435-678-3662
visitblanding.com

BLUFF FORT (SEASONAL)

55 North 6th East
435-672-9995 • hirf.org

MONUMENT VALLEY VISITOR CENTER

US Highway 163 Monument Valley Junction
435-727-5871 • www.navajonationparks.org

MONTICELLO WELCOME CENTER

216 S. Main St (US Highway 191), Monticello
435-587-2271 • monticelloutah.org

EDGE OF THE CEDARS STATE PARK & MUSEUM

660 West 400 North, Blanding
435-678-2238 • stateparks.utah.gov/parks/edge-of-the-cedars

GOOSENECKS STATE PARK

Highway 316 near the junction with US Hwy
162 north of Mexican Hat
stateparks.utah.gov/parks/goosenecks/

MANTI LA SAL NATIONAL FOREST (USFS)

397 North Main St, Monticello
435-587-2041 • fs.usda.gov/mantilasal/

COWORKING SPACES

Monticello Coworking Space, 80 N Main St

BUREAU OF LAND MANAGEMENT (BLM)

365 N. Main St (US Highway 191), Monticello
435-587-1500 • blm.gov/office/monticello-field-office

CANYONLANDS NATL. PARK

435-719-2313 • nps.gov/cany

GLEN CANYON NATL. REC. AREA

Up Lake Information:
435-684-7420 • nps.gov/glca

HOVENWEEP NATL. MONUMENT

General Information
970-562-4282 • nps.gov/hove

NATURAL BRIDGES NATL. MONUMENT

General Information:
435-692-1234 • nps.gov/nabr

RAINBOW BRIDGE NATL. MONUMENT

928-608-6200 • www.nps.gov/rabr

MONUMENT VALLEY NAVAJO TRIBAL PARK

435-727-5870 • navajonationparks.org

FOUR CORNERS MONUMENT

928-871-6647 • navajonationparks.org

BEARS EARS EDUCATION CENTER

567 W Main St, Bluff
435-414-0343 • bearsarsmonument.org

MAPS

Maps are available at the following:
sanjuanatvsafari.com – ATV / OHV
spear4all.com – ATV / OHV
cnha.org – Hiking, Biking, and ATV/OHV

Topographic: Topographic maps are available at the visitor centers.

MORE INFORMATION

We want your visit to Utah's Canyon Country to be enjoyable. Assistance with itineraries is available at 800-574-4386 or info@utahscanyoncountry.com

PHOTO CREDITS

Adobe Stock: 6, 11, 13, 18, 22, 26, 29, 30, 33, 40
Allison Yamamoto-Sparks: 9, 15, 18, 20, 25, 26, 31, 35, 36, 38, 40, 42, 46, 47, 51, 52, 53
Anna Day: 2-3
Bill Haven: 51
Bob Wick- BLM: 23, 49, 65
Desert Rose: 54
Dustin Randall: 45
Emily Ogden- NPS: 44
Emily Sierra Photography: 35
Eri Hayakawa: 17
Gilbert Rowley: 44
Goulding's Lodge: 61
Granary Bar & Grill: 61
iStock: 37
Jacob W. Frank: Cover, 6, 8, 12, 14, 15, 50
Jay Dash: 10, 3, 24, 28, 36, 39, 41, 49, 50, 60, Back
jenny_lemontie: 5
MacNeal Crank: Cover
Miriam Peterson: 33
Monticello City: 43
Mt Joe's Trail Rides: 63
Natalie Randall: 42, 45
Oculus Media: 26, 43, 52, 53, 61
Pratt Redd: 67
Sandra Salvas: 28
Shannon Hall: 61
Silas Sparks: 40, 42
Sonya Doctorian: 18, 19, 27, 52
Tom Till: 32,33
ULUM: 55
Utah Office of Tourism: 16, 18, 39, 41, 46, 47
Utah State Parks: 21
Wild Expeditions: 35, 63

VISIT OUR BLOG

utahscanyoncountry.wordpress.com



@SanJuanCounty



@utahscanyoncountry



@utahscanyoncountry

San Juan County thanks all the land management agencies who care for the stunning land in and around our county, including the Bureau of Land Management, U.S. Forest Service, National Park Service, Utah State Parks & Recreation, and other agencies.

SAFETY

Your safety is of utmost importance to us! Remember, this is a desert environment, even at higher elevations. Carry water, at least one gallon per person per day. And don't forget your pets and vehicles; they need water, too. Wear appropriate and protective clothing, especially a hat. Remember the day will warm up in the afternoon following a cool morning. Carry and use sunscreen. Plan your trip well. Stay with your group. If traveling alone, leave information as to your destination and expected date and time of return with someone, even if it is at the local visitor center.

DISCLAIMER: The information in this publication is presented in good faith and on the basis that San Juan County, nor their agents or employees, are liable (whether by reason of error, omission, negligence, lack of care or otherwise) to any person for any damage or loss whatsoever which has occurred or may occur in relation to that person taking or not taking (as the case may be) action in respect of any statement, information or advice given in this publication.

AREA MAP

ICON LEGEND

- Campground
- Airstrip
- Rest Area
- Historical Site
- Golf Course
- ATV Area
- Boat Ramp
- Marina
- Point of Interest
- Horseback Riding
- Rock Climbing
- Ranger Station
- Scenic Attraction
- Visitor Center

MAP LEGEND

- | Roads | Land Designation |
|--|---------------------------|
| Scenic Byway or Backway
<i>High Clearance Recommended</i> | National Park |
| Primitive Roads
<i>High Clearance Recommended</i> | National Monument |
| Passenger Vehicle | National Forest |
| Highway | National Recreation Area |
| Hole-in-the-Rock Historic Trail | Navajo Reservation |
| Hiking / Biking Trail | Primitive/Wilderness Area |

GETTING AROUND IN CANYON COUNTRY

Most areas and sites are on paved roads, some accessed via graded gravel, a few require 4 wheel drive. Most are within a short drive from our communities.

Those areas accessed by 4 wheel drive may require long days or overnight stays. Prepare for a wilderness experience. It is not recommended that you travel to remote sites alone or with only one vehicle. When wet, some roads are impassable even for a 4 wheel drive vehicle. Check weather and road conditions prior to a trip into the backcountry.



INTERNATIONAL & NATIONAL AIR SERVICE

Salt Lake City UT, Phoenix AZ, Las Vegas NV, Albuquerque NM, and Denver CO.

REGIONAL AIR SERVICE

Grand Junction, Durango, and Cortez CO, Farmington NM, Flagstaff AZ, and Moab UT.

AMTRAK RAIL SERVICE

Salt Lake City and Green River UT, Albuquerque and Grants NM, Las Vegas NV, and Denver and Grand Junction CO.

AUTO RENTAL

Available at all international and national airports, at Grand Junction and Durango CO, Moab UT, Farmington NM, and Flagstaff AZ.

SHUTTLE SERVICE

Salt Lake Express
saltlakeexpress.com, Twice daily northbound and southbound shuttle service between Blanding and SLC.



PRODUCED BY SAN JUAN COUNTY VISITOR SERVICES

800-574-4386 (USA and Canada)

435-587-3235



SAN JUAN COUNTY VISITOR SERVICES
117 South Main Street, P.O. Box 490 - Monticello, UT 84535-0490 USA
utahscanyoncountry.com • 800-574-4386

