



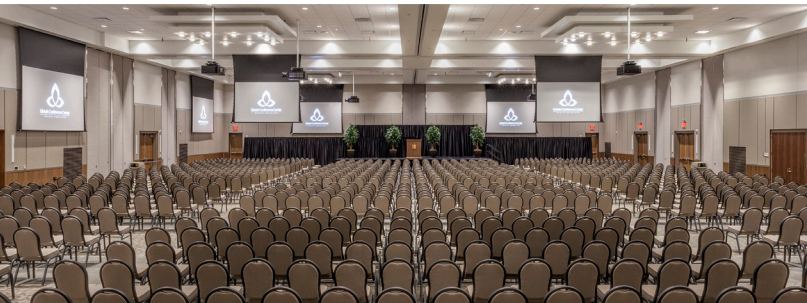
Uintah Conference Center



Successful events require a venue that provides the location, staff and technology you need to impress your guests. Located in Vernal, Utah, the Uintah Conference Center features 66,000 square feet of stunning space that can be modified into 23 different room configurations to accommodate groups of up to 1,600.

Let the Uintah Conference Center host your next:

- convention
- concert
- tradeshow
- banquet
- graduation
- reunion
- meeting
- expo
- reception





Uintah Conference Center

EVENTS ENERGIZED

The Uintah Conference Center is equipped with the most advanced audio/visual technology available. With Crestron Digital Media installed throughout the entire facility, presenters have the ability to display any kind of media anyplace in the building – including broadcasting wirelessly from handheld devices.

The main ballroom has five 165-inch screens and four 137-inch screens – each equipped with stunning digital display capability from the Highlite Laser projector. Complementing the screens – extreme color accuracy and picture clarity, the conference center also has a robust, built-in digital sound system in every room.

Flaming Gorge Ballroom

- 12,240 total square feet
- Seats 850 for banquet dining
- Theater seating fits 1,450 people
- Divides into seven breakout rooms

Split Mountain Meeting Room

- 3,024 sq. ft. of meeting space
- Divides into four breakout rooms
- Eight different configurations
- Floor-to-ceiling windows
- Drop down screen with audio/visual system

Paradise Room

- 3,028 sq. ft. of meeting space
- Floor to ceiling windows
- Perfect space for weddings, receptions or dining experiences
- Balcony with spectacular views
- Drop down screen with audio/visual system

Uintah Board Room

- Latest technology with 70-inch HD TV
- Advanced audio/visual system
- Easy-to-use video/phone conferencing
- Seating for 10 guests

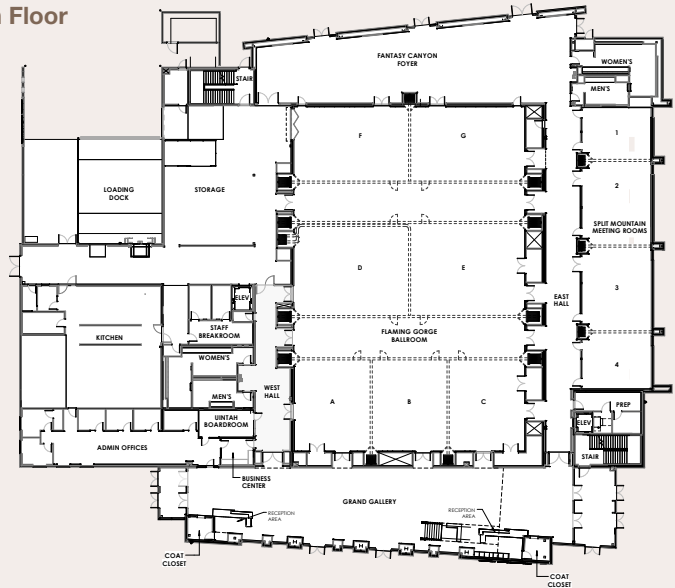
Ashley Executive Boardroom

- Latest technology with two 80-inch HD TVs
- Easy-to-use video/phone conferencing
- Visual displays for Skype, Webex, and Go To Meeting, etc.
- Built-in refreshment center
- Balcony with spectacular views
- Seating for 25 guests

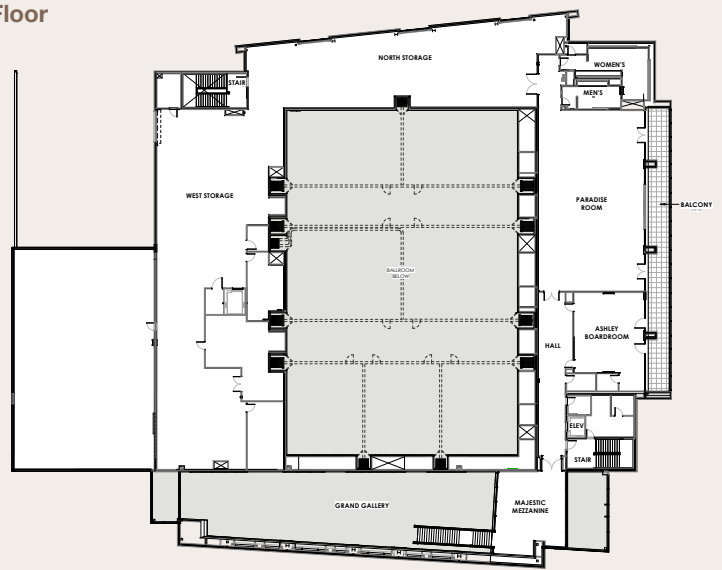
Other Amenities:

- Two reception desks for meeting planners to use.
- Business Center
- Full-service kitchen facility
- Boston player grand piano
- Customized sound and lights

Main Floor



2nd Floor



Room Name	Sq Ft	Room Size	Ceiling Height	Banquet	Theater	Class Room	U Shape
Flaming Gorge Ballroom	12,240	90' x 136'	19'	850	1,450	675	n/a
A	1,110	30' x 37'	19'	64	120	48	32
B	1,110	30' x 37'	19'	64	120	48	32
C	1,110	30' x 37'	19'	64	120	48	32
D	1,665	45' x 37'	19'	88	200	80	36
E	1,665	45' x 37'	19'	88	200	80	36
F	1,350	45' x 30'	19'	88	200	80	28
G	1,350	45' x 30'	19'	88	200	80	28
Split Mountain Meeting Room	3,024	27' x 112'	10'	200	300	160	n/a
1	594	27' x 22'	10'	40	56	32	20
2	918	27' x 34'	10'	64	98	48	24
3	918	27' x 34'	10'	64	98	48	24
4	594	27' x 22'	10'	40	56	32	20
Paradise Room	3028	42' x 72'	11' 6"	192	300	200	40
Ashley Boardroom	896	28' x 32'	10' 6"	n/a	n/a	n/a	n/a
Uintah Boardroom	231	21' x 11'	8' 6"	n/a	n/a	n/a	n/a
Fantasy Canyon Foyer	3,795	115' x 33'	11'	n/a	n/a	n/a	n/a
Grand Gallery	5,049	153' x 33'	36'	n/a	n/a	n/a	n/a
Majestic Mezzanine	924	28' x 33'	13'	n/a	n/a	n/a	n/a

