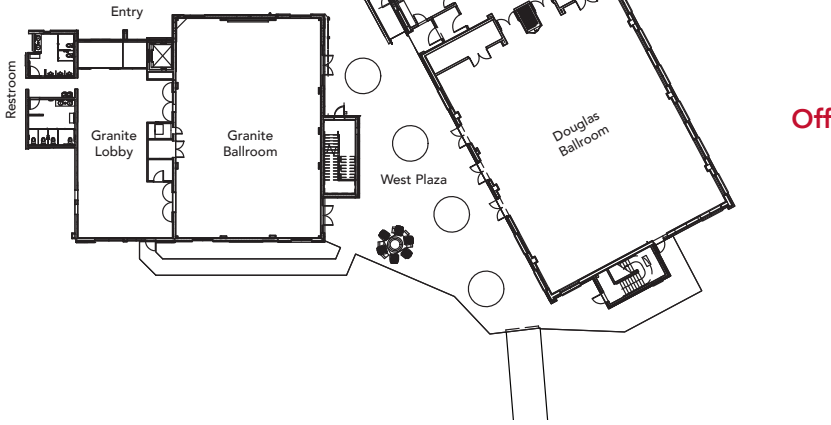
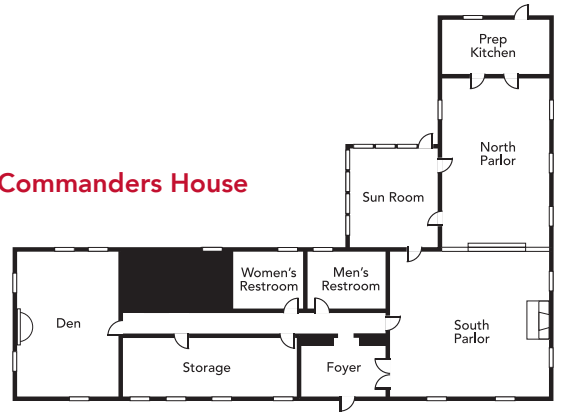


MEETING FACILITIES, LAYOUTS, AND CAPACITIES

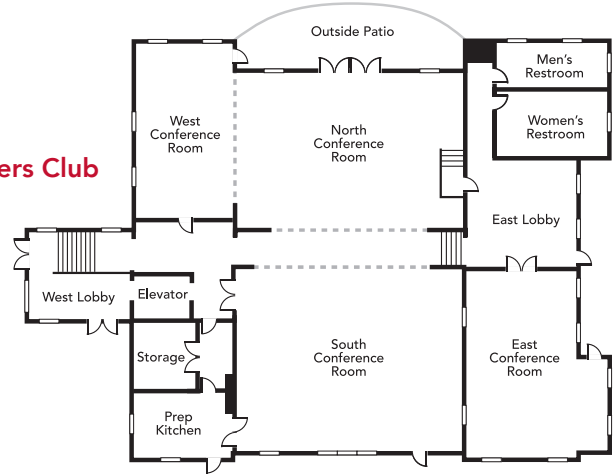
University Guest House



Commanders House



Officers Club



University Guest House Conference Center

Room Name	Dimensions	Sq. Footage	Theatre	Banquet	U Shaped	Classroom	Hollow Square
Douglas Ballroom	73' x 59'	4,300	450	300	78	216	90
Douglas East	73' x 26'	1,898	150	100	60	90	60
Douglas West	73' x 32'	2,336	210	120	63	105	66
Alpine Room	26' X 30'	780	50	40	21	36	24
Bonneville Room	24' X 30'	720	50	40	21	27	24
City Creek Room	24' X 30'	720	50	40	21	27	24
Ensign Boardroom	17' x 24'	408			Conference Table for 12		
Foothills Boardroom	17' X 14'	238			Conference Table for 10		
Granite Ballroom	60' X 40'	2400	250	150	54	96	60
Granite North	30' X 40'	1200	100	60	30	48	36
Granite South	30' x 40'	1200	100	60	30	48	36

Officers Club

North Room	30' x 44'	1320	100	80	30	51	30
South Room	36' x 45'	1620	170	100	40	72	48
East Room	20' x 39'	780	64	40	24	30	30
West Room	20' x 35'	700	64	30	21	24	18
North & South Rooms	n/a	2940	300	200	n/a	138	n/a
North & West Rooms	n/a	2020	150	100	n/a	n/a	n/a

Commanders House

South Parlor	20' x 30'	600	60	48	24	36	30
North Parlor	26' x 30'	780	48	40	15	24	18
Den	18' x 27'	486	40	24	15	18	18
Sun Room	18' x 16'	288	n/a	n/a	n/a	n/a	n/a

Post Theater

Seating for 250

Post Chapel

Pew seating for 150

Round tables are 72" or 60" in diameter and sit 8-10 people; banquet tables are 6' x 2.5'; classroom tables are 6' x 18" and seat 2-3 people. Contact your coordinator for complete diagrams of all meeting space. All facilities (except the Post Chapel) are equipped with data, voice and video. AV is available for all meeting spaces and events.