



Valid Period: March 27 - April 10 2025

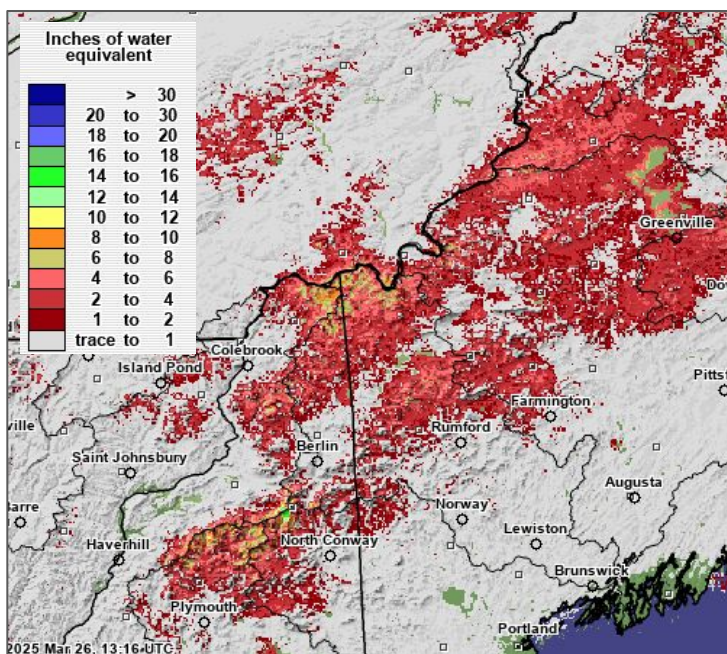
OVERVIEW:

- There is a **Elevated Risk** for flooding through early April
- Rivers are nearing seasonal highest mean streamflows due to early melt-out, reducing runoff storage
- An active weather pattern expected the next 2 weeks with above normal precipitation possible
- Headwaters and mountain snowpack growth is likely over the next 7 days, but as temperatures rebound the snowmelt season that began in late March will continue with only brief interruptions

SNOWPACK	<ul style="list-style-type: none"> Snow water equivalents (SWE) have declined over the last 7 days in the headwaters, but briefly improved from the foothills to the coasts <ul style="list-style-type: none"> Foothills to the coast: Snow Depth 0-2" Mountains from 1,000-4,000 ft: Depths 12-22", SWE 4-6" Above 4,000 ft: Depths 2 to 3 ft, SWE around 6-8" Headwater and Mountain snowpack typically melts out between late April and early May
RAIN/SNOW FORECAST	<ul style="list-style-type: none"> An active pattern is expected over the next two weeks with multiple opportunities for rain, snow, and possibly ice Pattern supports a high probability of above normal precipitation through week 2
TEMPERATURE OUTLOOK	<ul style="list-style-type: none"> Below normal temperatures the next 7 days limiting melt unless otherwise accelerated by rainfall Gradual return to seasonable temperatures late next week and thereafter will support melting of the remaining snowpack
RIVER ICE	<ul style="list-style-type: none"> River ice has flushed and no longer poses a threat for area rivers

Snow Water Equivalent Mar 27, 2025

Source NOHRSC SNODAS



Snow Water Equivalent Ensemble Forecasts Androscoggin Basin Headwaters

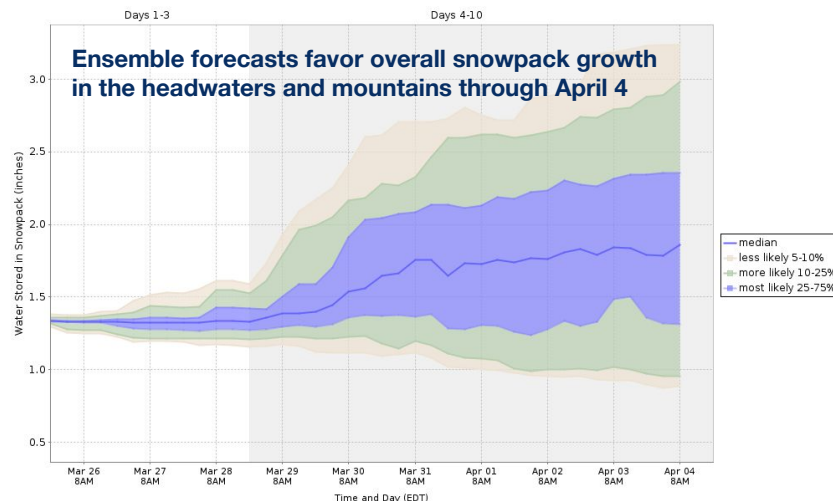
HEFS - 10 Day Snow Water Equivalent Probabilities

Based on Hydrologic Ensemble Forecast Service Model Simulations
Used to Estimate the Range of Possible River Levels



Mar 26 - Apr 05, 2025

Androscoggin River at Gorham, NH (GRMN3)



Model runtime: 08:00 PM EDT Mar 25 2025
Northeast River Forecast Center

